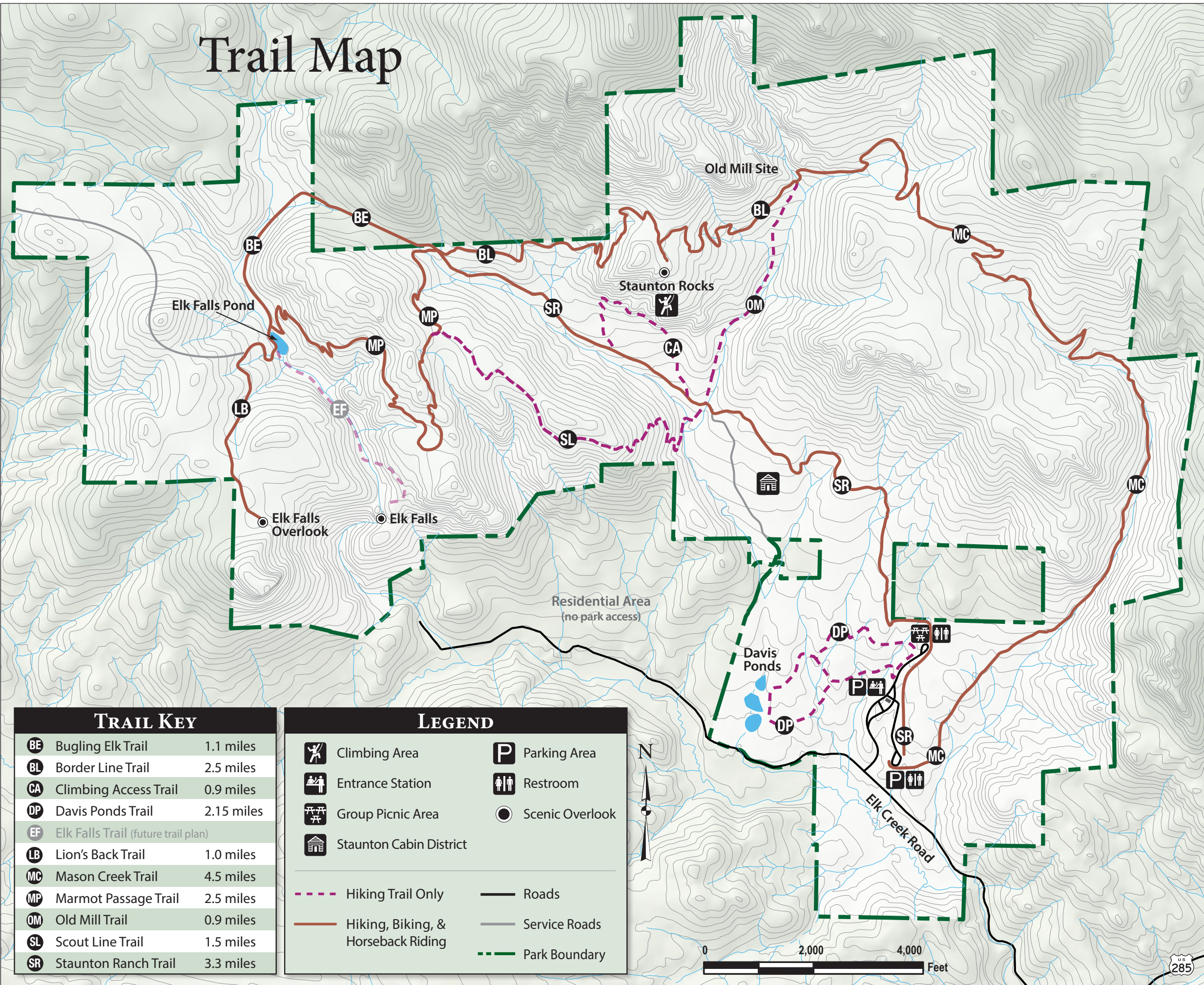


# Trail Map



TRAIL KEY	
BE	Bugling Elk Trail 1.1 miles
BL	Border Line Trail 2.5 miles
CA	Climbing Access Trail 0.9 miles
DP	Davis Ponds Trail 2.15 miles
EF	Elk Falls Trail (future trail plan)
LB	Lion's Back Trail 1.0 miles
MC	Mason Creek Trail 4.5 miles
MP	Marmot Passage Trail 2.5 miles
OM	Old Mill Trail 0.9 miles
SL	Scout Line Trail 1.5 miles
SR	Staunton Ranch Trail 3.3 miles

LEGEND	
	Climbing Area
	Entrance Station
	Group Picnic Area
	Staunton Cabin District
	Parking Area
	Restroom
	Scenic Overlook
	Hiking Trail Only
	Hiking, Biking, & Horseback Riding
	Roads
	Service Roads
	Park Boundary



## Staunton State Park

### Enjoy Your Park Safely

Staunton State Park offers you the best in a Colorado mountain experience. But keep in mind:

- The park ranges in elevation from 8,100 to over 10,000 feet, so bring water, sunscreen, and a hat to protect against dehydration and sunburn.
- Mountain weather can change quickly. Dress in layers and carry rain gear.
- Cell phone service in the park is limited. In case of an emergency call 911. First Aid assistance is available from park rangers.

### Trails

There's a trail suitable for every visitor who wants to experience the park up close and personal—on foot, by bike, or on horseback. The trails are clearly marked, so it's easy to find the right trail type for you. Share the trail and respect other users by:

- Staying on the trail. Shortcutting destroys vegetation and increases erosion.
- Moving to the uphill side of the trail to let others pass.
- Alerting other users before you pass them.
- Admiring wildflowers and rocks, but leaving them for others to enjoy.
- Keeping your pets on a leash at all times.



12102 S. Elk Creek Road • Pine, Colorado 80470  
 (303) 816-0912 • E-mail: staunton.park@state.co.us

[www.cpw.state.co.us](http://www.cpw.state.co.us)