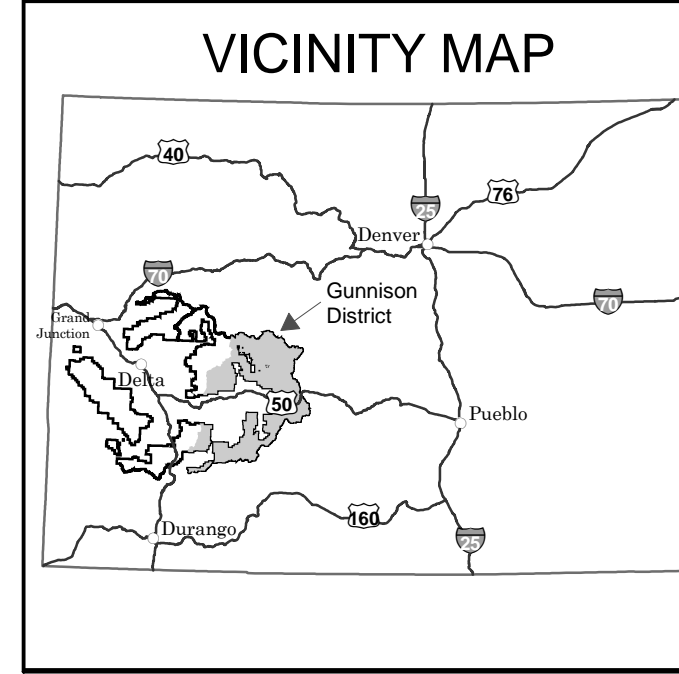


U.S. Department of Agriculture
Forest Service
MAY 1, 2011
COLORADO
America's Great Outdoors
Motor Vehicle Use Map
Gunnison National Forest
Gunnison Ranger District



INFORMATION SOURCES

Supervisor's Office
Gunnison National Forest
2250 Highway 50
Delta, CO 81416
(970) 874-6800
TTY (970) 874-6660

Gunnison Ranger District
216 North Colorado
Gunnison, CO 81230
Voice and TTY
(970) 641-0471

www.fs.usda.gov/gmug

In Case of Emergency Dial 911



Travel and recreate with minimum impact.

Respect the environment and the rights of others.

Educate yourself plan and prepare before you

Allow for future use of the outdoors by leaving it better than you found it.

Discover the rewards of responsible recreation.

For more information on Tread Lightly!, go to www.treadlightly.org or call 1-800-966-9900.

The U.S. Department of Agriculture (USDA) prohibits discrimination in all its programs and activities on the basis of race, color, national origin, age, disability, and where applicable, sex, marital status, familial status, parental status, religion, sexual orientation, genetic information, political beliefs, reprisal, or because all or part of an individual's income is derived from any public assistance program. (Not all prohibited bases apply to all programs.) Persons with disabilities who require alternative means for communication of program information (Braille, large print, audiotape, etc.) should contact USDA's TARGET Center at (202) 720-2600 (voice and TDD). To file a complaint of discrimination, write to USDA, Director, Office of Civil Rights, 1400 Independence Avenue, S.W., Washington, D.C. 20250-9410, or call (800) 795-3272 (voice) or (202) 720-6382 (TDD). USDA is an equal opportunity provider and employer.

PURPOSE AND CONTENTS OF THIS MAP

The designations shown on this motor vehicle use map (MVUM) were made by the responsible official pursuant to 36 CFR 212.51; are effective as of the date on the front cover of this MVUM, and will remain in effect until superseded by next year's MVUM.

It is the responsibility of the user to acquire the current MVUM. This MVUM shows the National Forest System roads, National Forest System trails, and the areas on National Forest System lands in the Gunnison Ranger District that are designated for motor vehicle use pursuant to 36 CFR 212.51. This MVUM also identifies the vehicle classes allowed on each route and in each area, and any seasonal restrictions that apply on those routes and in those areas.

Designation of a road, trail, or area for motor vehicle use by a particular class of vehicle under 36 CFR 212.51 should not be interpreted as encouraging or inviting use or implying that the road, trail, or area is passable, actively maintained, or safe for travel. Motor vehicle designations include parking along designated routes and at facilities associated with designated routes when it is safe to do so and when not causing damage to National Forest System resources. Seasonal weather conditions and natural events may render designated roads and trails impassable for extended periods. Designated areas may contain dangerous or impassable terrain. Many designated roads and trails may be passable only by high-clearance vehicles or four-wheel-drive vehicles. Maintenance of designated roads and trails will depend on available resources, and many may receive little maintenance.

This motor vehicle use map identifies those roads, trails, and areas designated for the motor vehicle use under 36 CFR 212.51 for the purpose of enforcing the prohibition at 36 CFR 261.13. This is a limited purpose. The other public roads are shown for information and navigation purposes only and are not subject to designation under the Forest Service travel management regulation.

These designations apply only to National Forest System roads, National Forest System trails, and areas on National Forest System lands.

PROHIBITIONS

It is prohibited to possess or operate a motor vehicle on National Forest System lands on the Gunnison National Forest other than in accordance with these designations (36 CFR 261.13)

Violators of 36 CFR 261.13 are subject to a fine of up to \$5,000, imprisonment for up to 6 months, or both (18 U.S.C. 3571(a)). This prohibition applies regardless of the presence or absence of signs.

This map does not display nonmotorized uses, over-snow uses, or other facilities and attractions on the Pagosa Ranger District. Obtain forest visitor information from the local national forest office.

Designated roads, trails and areas may also be subject to temporary, emergency closures. As a visitor, you must comply with signs notifying you of such restrictions. A national forest may issue an order to close a road, trail or area on a temporary basis to protect the life, health, or safety of forest visitors or the natural or cultural resources in these areas. Such a temporary and/or emergency closure is consistent with the Travel Management Rule (36 CFR 212.52 (b), 36 CFR 261 subpart B).

The designation "road or trail open to all motor vehicles" does not supersede State traffic law.

OPERATOR RESPONSIBILITIES

Operating a motor vehicle on National Forest System roads, National Forest System trails, and in areas on National Forest System lands carries a greater responsibility than operating that vehicle in a city or other developed setting. Not only must you know and follow all applicable traffic laws, you need to show concern for the environment as well as other forest users. The misuse of motor vehicles can lead to the temporary or permanent closure of any designated road, trail, or area. As a motor vehicle operator, you are also subject to State traffic law, including State requirements for licensing, registration, and operation of the vehicle in question.

Motor vehicle use, especially off-highway vehicle use, involves inherent risks that may cause property damage, serious injury, and possibly death to participants. Drive cautiously and anticipate rough surfaces and features, such as snow, mud, vegetation, and water crossings common to remote driving conditions. By your participation, you voluntarily assume full responsibility for these damages, risks, and dangers. Take care at all times to protect yourself and those under your responsibility.

Much of the Gunnison Ranger District is remote. Medical assistance may not be readily available. Cellular telephones do not work in many areas of the Gunnison Ranger District. Take adequate food, water, first-aid supplies, and other equipment appropriate for the conditions and expected weather.

ALWAYS REMEMBER TO RESPECT PRIVATE LAND! PROTECT YOUR PRIVILEGE. STAY ON DESIGNATED AREAS.

Read and understand this map in its entirety. If you have questions, please contact the Gunnison Ranger District for clarification.

As a motor vehicle operator on a National Forest System road, trail, or area you must comply with this map, as well as all Federal, State, and local laws and regulations. Compliance with these rules is your responsibility.

Seasonal Designation Table		
	Roads open to all Vehicles, Seasonally	
Route Number	Dates Allowed	
810, 810.1A, 810.A1, 810.A2	5/16- 11/21	
243, 721, 721.1B, 723, 724, 724.2B, 727, 728, 740, 746, 761, 765, 767, 768, 790, 794, 794.2B, 816, 822, 874, 882	5/27- 2/28	
825, 825.1A, 862, 862.1C, 862, 862.1B, 862.1C, 862, 862.1B	6/16- 12/14	
317	7/1- 2/28	
726, 818	7/1- 11/21	
735, 784, 784.1A, 784.1B	7/1- 9/30	
	Roads open to Licensed Vehicles, Seasonally	
Route Number	Dates Allowed	
729	5/27- 2/28	
	Trails Open to all Vehicles, Seasonally	
Route Number	Dates Allowed	
738, 740	5/27- 2/28	
863, 863.2A, 863.2E	6/16- 12/14	
298	8/01- 8/31	
	Trails Open to Vehicles 50 inches or Less in Width, Seasonally	
Route Number	Dates Allowed	
457, 458, 464	7/1- 9/30	
	Trails Open to Motorcycles, Seasonally	
Route Number	Dates Allowed	
740	5/27- 2/28	
423, 533	6/16- 9/30	
	Special Vehicle Designation	
Route Number	Dates Allowed	
619, 633	Trail Open to OHV Greater Than 50 inches	

Legend

— Roads Open to Highway Legal Vehicles

— Roads Open to All Vehicles

— Trails Open to All Vehicles

— Trails Open to Vehicles 50" or Less in Width

— Trails Open to Motorcycles Only

— Special Vehicle Designation

— Seasonal Designation (See Table)

• • • Dispersed Camping

— Highways, U.S. State

— Other Public Roads

765.3E1 Short Route Identifier

■ Ranger District Office

▲ FS Campground

■ Motorized Trailhead

▲ Peaks

▭ Forest or Unit Boundary

▭ National Forest System Lands

▭ Non-National Forest System Lands within the National Forest

▭ Lakes and Rivers

▭ Wilderness Areas

▭ Township and Range Lines

▭ Section Lines

0 0.5 1 2 3 4 Miles

N

EXPLANATION OF LEGEND ITEMS

Roads Open to Highway Legal Vehicles Only:

These roads are open only to motor vehicles licensed under State law for general operation on all public roads within the state.

Roads Open to All Vehicles:

These roads are open to all motor vehicles, including smaller off-highway vehicles that may not be licensed for highway use (but not to oversize or overweight vehicles under State traffic law).

Trails Open to All Vehicles:

These trails are open to all motor vehicles, including both highway legal and nonhighway legal vehicles.

Trails Open to Vehicles 50 inches or Less in Width:

These trails open only to motor vehicles less than 50 inches in width at the widest point on the vehicle.

Trails Open to Motorcycles Only:

These trails are open only to motorcycles. Sidecars are not permitted.

Special Vehicle Designation:

This symbol indicates the road or trail is open to classes of vehicles other than those listed above. Refer to the Seasonal and Special Designation Table for further instructions.

Seasonal Designation:

This symbol, used in conjunction with one of the other road or trail symbols, indicates that the road or trail is open only during certain portions of the year. Refer to Seasonal and Special Designation Table for further instructions.

Dispersed Camping:

This symbol is used along with a designated road or trail to indicate limited cross-country motor vehicle use within a specific distance of that route, solely for the purpose of dispersed camping. The dots indicate where this activity is permitted. They may be on the left, right, or both sides of the route. Refer to the Dispersed Camping Table for specifics.

Other Public Roads and Trails:

Highways, U.S. State

Other Public Roads

These symbols are used to show routes the Forest Service does not have jurisdiction over or perfected access and has not designated for motorized use. These symbols are part of the reference layers showing connections to towns and cities outside the forest boundary and routes where the Forest Service does not have perfected access within the forest boundary.

Short Route Identifier: See Short Route Table

765.3E1

This symbol is used for roads that are too short to show a symbol type on the map. The symbol contains the number of the road or trail. Users should refer to the corresponding number in the Short Route Table for designation information.

Motorized Trail Access:

■ This symbol indicates a trailhead for access to a motorized route. Not all motorized routes have trailheads and those that do may range from primitive to developed.

Dispersed Camping

Motor vehicle use off designated roads for the purpose of dispersed camping is permitted for up to 300 feet from the centerline of the road, allowing the same vehicles the road allows and the same season as the road is open.

This applies to all roads with the exceptions listed below.

Prohibited

Rd 742: From Almont to Rivers End Campground

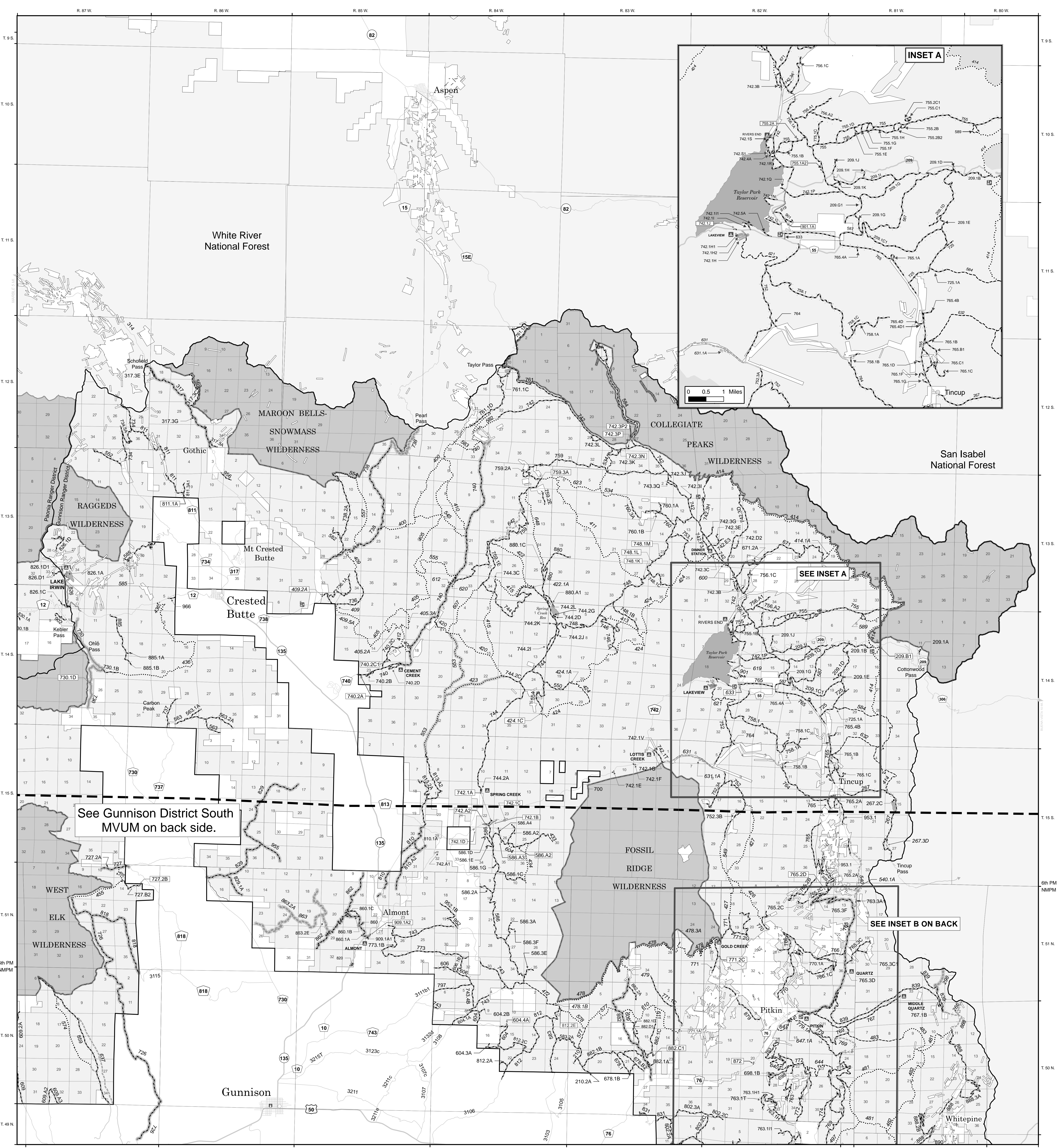
County Rd 12: From Forest Boundary to Kebler Pass

Motorized travel allowed 30 feet off of designated road for dispersed camping

317, 317.3A, 317.3C, 317.3E, 317.3F, 317.3G, 317.4C

See Gunnison District South MVUM on back side.

727.2A, 727.2B, 727.2C, 727.2D, 727.2E, 727.2F, 727.2G, 727.2H, 727.2I, 727.2J, 727.2K, 727.2L, 727.2M, 727.2N, 727.2O, 727.2P, 727.2Q, 727.2R, 727.2S, 727.2T, 727.2U, 727.2V, 727.2W, 727.2X, 727.2Y, 727.2Z, 727.2AA, 727.2AB, 727.2AC, 727.2AD, 727.2AE, 727.2AF, 727.2AG, 727.2AH, 727.2AI, 727.2AJ, 727.2AK, 727.2AL, 727.2AM, 727.2AN, 727.2AO, 727.2AP, 727.2AQ, 727.2AR, 727.2AS, 727.2AT, 727.2AU, 727.2AV, 727.2AW, 727.2AX, 727.2AY, 727.2AZ, 727.2BA, 727.2BB, 727.2BC, 727.2BD, 727.2BE, 727.2BF, 727.2BG, 727.2BH, 727.2BI, 727.2BJ, 727.2BK, 727.2BL, 727.2BM, 727.2BN, 727.2BO, 727.2BP, 727.2BQ, 727.2BR, 727.2BS, 727.2BT, 727.2BU, 727.2BV, 727.2BW, 727.2BX, 727.2BY, 727.2BZ, 727.2CA, 727.2CB, 727.2CC, 727.2CD, 727.2CE, 727.2CF, 727.2CG, 727.2CH, 727.2CI, 727.2CJ, 727.2CK, 727.2CL, 727.2CM, 727.2CN, 727.2CO, 727.2CP, 727.2CQ, 727.2CR, 727.2CS, 727.2CT, 727.2CU, 727.2CV, 727.2CW, 727.2CX, 727.2CY, 727.2CZ, 727.2DA, 727.2DB, 727.2DC, 727.2DD, 727.2DE, 727.2DF, 727.2DG, 727.2DH, 727.2DI, 727.2DJ, 727.2DK, 727.2DL, 727.2DM, 727.2DN, 727.2DO, 727.2DP, 727.2DQ, 727.2DR, 727.2DS, 727.2DT, 727.2DU, 727.2DV, 727.2DW, 727.2DX, 727.2DY, 727.2DZ, 727.2EA, 727.2EB, 727.2EC, 727.2ED, 727.2EE, 727.2EF, 727.2EG, 727.2EH, 727.2EI, 727.2EJ, 727.2EK, 727.2EL, 727.2EM, 727.2EN, 727.2EO, 727.2EP, 727.2EQ, 727.2ER, 727.2ES, 727.2ET, 727.2EU, 727.2EV, 727.2EW, 727.2EX, 727.2EY, 727.2EZ, 727.2FA, 727.2FB, 727.2FC, 727.2FD, 727.2FE, 727.2FF, 727.2FG, 727.2FH, 727.2FI, 727.2FJ, 727.2FK, 727.2FL, 727.2FM, 727.2FN, 727.2FO, 727.2FP, 727.2FQ, 727.2FR, 727.2FS, 727.2FT, 727.2FU, 727.2FV, 727.2FW, 727.2FX, 727.2FY, 727.2FZ, 727.2GA, 727.2GB, 727.2GC, 727.2GD, 727.2GE, 727.2GF, 727.2GG, 727.2GH, 727.2GI, 727.2GJ, 727.2GK, 727.2GL, 727.2GM, 727.2GN, 727.2GO, 727.2GP, 727.2GQ, 727.2GR, 727.2GS, 727.2GT, 727.2GU, 727.2GV, 727.2GW, 727.2GX, 727.2GY, 727.2GZ, 727.2HA, 727.2HB, 727.2HC, 727.2HD, 727.2HE, 727.2HF, 727.2HG, 727.2HI, 727.2HJ, 727.2HK, 727.2HL, 727.2HM, 727.2HN, 727.2HO, 727.2HP, 727.2HQ, 727.2HR, 727.2HS, 727.2HT, 727.2HU, 727.2HV, 727.2HW, 727.2HX, 727.2HY, 727.2HZ, 727.2IA, 727.2IB, 727.2IC, 727.2ID, 727.2IE, 727.2IF, 727.2IG, 727.2IH, 727.2II, 727.2IJ, 727.2IK, 727.2IL, 727.2IM, 727.2IN, 727.2IO, 727.2IP, 727.2IQ, 727.2IR, 727.2IS, 727.2IT, 727.2IU, 727.2IV, 727.2IW, 727.2IX, 727.2IY, 727.2IZ, 727.2JA, 727.2JB, 727.2JC, 727.2JD, 727.2JE, 727.2JF, 727.2JG, 727.2JH, 727.2JI, 727.2JJ, 727.2JK, 727.2JL, 727.2JM, 727.2JN, 727.2JO, 727.2JP, 727.2JQ, 727.2JR, 727.2JS, 727.2JT, 727.2JU, 727.2JV, 727.2JW, 727.2JX, 727.2JY, 727.2JZ, 727.2KA, 727.2KB, 727.2KC, 727.2KD, 727.2KE, 727.2KF, 727.2KG, 727.2KH, 727.2KI, 727.2KJ, 727.2KK, 727.2KL, 727.2KM, 727.2KN, 727.2KO, 727.2KP, 727.2KQ, 727.2KR, 727.2KS, 727.2KT, 727.2KU, 727.2KV, 727.2KW, 727.2KX, 727.2KY, 727.2KZ, 727.2LA, 727.2LB, 727.2LC, 727.2LD, 727.2LE, 727.2LF, 727.2LG, 727.2LH, 727.2LI, 727.2LJ, 727.2LK, 727.2LM, 727.2LN, 727.2LO, 727.2LP, 727.2LQ, 727.2LR, 727.2LS, 727.2LT, 727.2LU, 727.2LV, 727.2LW, 727.2LX, 727.2LY, 727.2LZ, 727.2MA, 727.2MB, 727.2MC, 727.2MD, 727.2ME, 727.2MF, 727.2MG, 727.2MH, 727.2MI, 727.2MJ, 727.2MK, 727.2ML, 727.2MN, 727.2MO, 727.2MP, 727.2MQ, 727.2MR, 727.2MS, 727.2MT, 727.2MU, 727.2MV, 727.2MW, 727.2MX, 727.2MY, 727.2MZ, 727.2NA, 727.2NB, 727.2NC, 727.2ND, 727.2NE, 727.2NF, 727.2NG, 727.2NH, 727.2NI, 727.2NJ, 727.2NK, 727.2NL, 727.2NM, 727.2NN, 727.2NO, 727.2NP, 727.2NQ, 727.2NR, 727.2NS, 727.2NT, 727.2NU, 727.2NV, 727.2NW, 727.2NX, 727.2NY, 727.2NZ, 727.2OA, 727.2OB, 727.2OC, 727.2OD, 727.2OE, 727.2OF, 727.2OG, 727.2OH, 727.2OI, 727.2OJ, 727.2OK, 727.2OL, 727.2OM, 727.2ON, 727.2OO, 727.2OP, 727.2OQ, 727.2OR, 727.2OS, 727.2OT, 727.2OU, 727.2OV, 727.2OW, 727.2OX, 727.2OY, 727.2OZ, 727.2PA, 727.2PB, 727.2PC, 727.2PD, 727.2PE, 727.2PF, 727.2PG, 727.2PH, 727.2PI, 727.2PJ, 727.2PK, 727.2PL, 727.2PM, 727.2PN, 727.2PO, 727.2PP, 727.2PQ, 727.2PR, 727.2PS, 727.2PT, 727.2PU, 727.2PV, 727.2PW, 727.2PX, 727.2PY, 727.2PZ, 727.2QA, 727.2QB, 727.2QC, 727.2QD, 727.2QE, 727.2QF, 727.2QG, 727.2QH, 727.2QI, 727.2QJ, 727.2QK, 727.2QL, 727.2QM, 727.2QN, 727.2QO, 727.2QP, 727.2QQ, 727.2QR, 727.2QS, 727.2QT, 727.2QU, 727.2QV, 727.2QW, 727.2QX, 727.2QY, 727.2QZ, 727.2RA, 727.2RB, 727.2RC, 727.2RD, 727.2RE, 727.2RF, 727.2RG, 727.2RH, 727.2RI, 727.2RJ, 727.2RK, 727.2RL, 727.2RM, 727.2RN, 727.2RO, 727.2RP, 727.2RQ, 727.2RR, 727.2RS, 727.2RT, 727.2RU, 727.2RV, 727.2RW, 727.2RX, 727.2RY, 727.2RZ, 727.2SA, 727.2SB, 727.2SC, 727.2SD, 727.2SE, 727.2SF, 727.2SG, 727.2SH, 727.2SI, 727.2SJ, 727.2SK, 727.2SL, 727.2SM, 727.2SN, 727.2SO, 727.2SP, 727.2SQ, 727.2SR, 727.2SS, 727.2ST, 727.2SU, 727.2SV, 727.2SW, 727.2SX, 727.2SY, 727.2SZ, 727.2TA, 727.2TB, 727.2TC, 727.2TD, 727.2TE, 727.2TF, 727.2TG, 727.2TH, 727.2TI, 727.2TJ, 727.2TK, 727.2TL, 727.2TM, 727.2TN, 727.2TO, 727.2TP, 727.2TQ, 727.2TR, 727.2TS, 727.2TT, 727.2TU, 727.2TV, 727.2TW, 727.2TX, 727.2TY, 727.2TZ, 727.2UA, 727.2UB, 727.2UC, 727.2UD, 727.2UE, 727.2UF, 727.2UG, 727.2UH, 727.2UI, 727.2UJ, 727.2UK, 727.2UL, 727.2UM, 727.2UN, 727.2UO, 727.2UP, 727.2UQ, 727.2UR, 727.2US, 727.2UT, 727.2UU, 727.2UV, 727.2UW, 727.2UX, 727.2UY, 727.2UZ, 727.2VA, 727.2VB, 727.2VC, 727.2VD, 727.2VE, 727.2VF, 727.2VG, 727.2VH, 727.2VI, 727.2VJ, 727.2VK, 727.2VL, 727.2VM, 727.2VN, 727.2VO, 727.2VP, 727.2VQ, 727.2VR, 727.2VS, 727.2VT, 727.2VU, 727.2VV, 727.2VW, 727.2VX, 727.2VY, 727.2VZ, 727.2WA, 727.2WB, 727.2WC, 727.2WD, 727.2WE, 727.2WF, 727.2WG, 727.2WH, 727.2WI, 727.2WJ, 727.2WK, 727.2WL, 727.2WM, 727.2WN, 727.2WO, 727.2WP, 727.2WQ, 727.2WR, 727.2WS, 727.2WT, 727.2WU, 727.2WV, 727.2WW, 727.2WX, 727.2WY, 727.2WZ, 727.2XA, 727.2XB, 727.2XC, 727.2XD, 727.2XE, 727.2XF, 727.2XG, 727.2XH, 727.2XI, 727.2XJ, 727.2XK, 727.2XL, 727.2XM, 727.2XN, 727.2XO, 727.2XP, 727.2XQ, 727.2XR, 727.2XS, 727.2XT, 727.2XU, 727.2XV, 727.2XW, 727.2XX, 727.2XY, 727.2XZ, 727.2YA, 727.2YB, 727.2YC, 727.2YD, 727.2YE, 727.2YF, 727.2YG, 727.2YH, 727.2YI, 727.2YJ, 727.2YK, 727.2YL, 727.2YM, 727.2YN, 727.2YO, 727.2YP, 727.2YQ, 727.2YR, 727.2YS, 727.2YT, 727.2YU, 727.2YV, 727.2YW, 727.2YX, 727.2YY, 727.2YZ, 727.2ZA, 727.2ZB, 727.2ZC, 727.2ZD, 727.2ZE, 727.2ZF, 727.2ZG, 727.2ZH, 727.2ZI, 727.2ZJ, 727.2ZK, 727.2ZL, 727.2ZM, 727.2ZN, 727.2ZO, 727.2ZP, 727.2ZQ, 727.2ZR, 727.2ZS, 727.2ZT, 727.2ZU, 727.2ZV, 727.2ZW, 727.2ZX, 727.2ZY, 727.2ZZ



SEE INSET B ON BACK