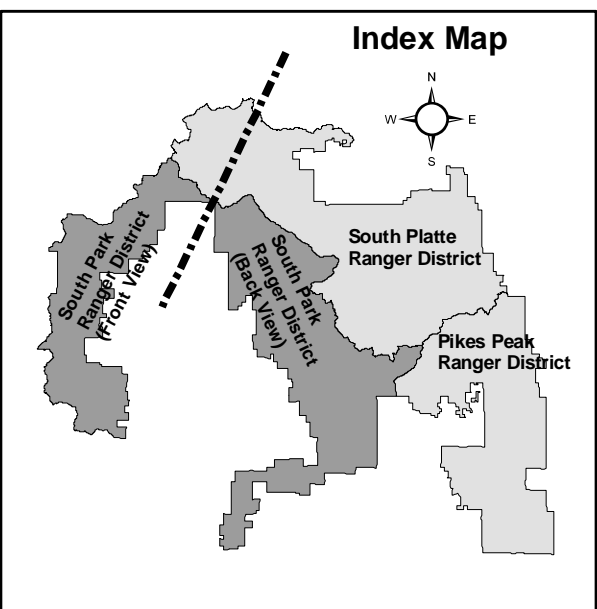
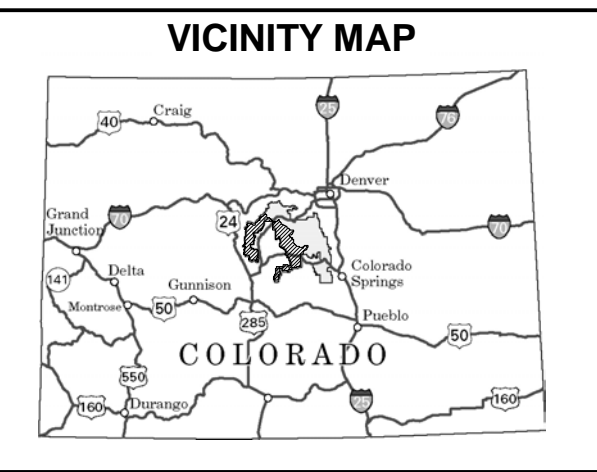




Motor Vehicle Use Map

Pike National Forest South Park Ranger District



INFORMATION SOURCES

South Park Ranger District
320 Hwy 285
Fairplay, CO 80440
(719) 836-2031

Forest Supervisor
Pike and San Isabel National Forests
Cimarron and Comanche National Grasslands
2840 Kachina Drive
Pueblo, CO 81008
(719) 553-1400

In case of Emergency: Dial 911

South Park Ranger District Website:
www.fs.fed.us/r2/psicc/sopa/

treadlightly!
LEAVING A GOOD IMPRESSION

Travel and recreate with minimum impact.

Respect the environment and the rights of others.

Educate yourself plan and prepare before you go.

Allow for future use of the outdoors by leaving it better than you found it.

Discover the rewards of responsible recreation.

For more information on Tread Lightly!, go to www.treadlightly.org or call 1-800-966-9900.

The U.S. Department of Agriculture (USDA) prohibits discrimination in all its programs and activities on the basis of race, color, national origin, age, disability, and where applicable, sex, marital status, familial status, parental status, religion, sexual orientation, genetic information, political beliefs, reprisal, or because all or part of an individual's income is derived from any public assistance program. (Not all prohibited bases apply to all programs.) Persons with disabilities who require alternative means for communication of program information (Braille, large print, audiotape, etc.) should contact USDA's TARGET Center at (202) 720-2600 (voice and TDD). To file a complaint of discrimination, write to USDA, Director, Office of Civil Rights, 1400 Independence Avenue, S.W., Washington, D.C. 20250-9410, or call (800) 795-3272 (voice) or (202) 720-6382 (TDD). USDA is an equal opportunity provider and employer.

PURPOSE AND CONTENTS OF THIS MAP

The designations shown on this map are effective as of the date stamped or printed on the front cover. This map shows the National Forest System roads, National Forest System trails, and the areas on National Forest System lands in the South Park Ranger District that are designated for motor vehicle use pursuant to 36 CFR 212.51. This map also contains a list of those designated roads, trails, and areas that enumerates the types of vehicles that are allowed on each route and in each area and any seasonal restrictions that apply on those routes and in those areas.

Designation of a road, trail, or area for motor vehicle use by a particular class of vehicle under 36 CFR 212.51 should not be interpreted as encouraging or inviting use, or to imply that the road, trail or area is passable, actively maintained, or safe for travel. Motor vehicle designations include parking along designated routes and at facilities associated with designated routes when it is safe to do so and when not causing damage to National Forest System resources. Seasonal weather conditions and natural events may render designated routes and trails impassable for extended periods. Designated areas may contain dangerous or impassable terrain. Many designated roads and trails may be passable only by high-clearance vehicles or four-wheel drive vehicles. Maintenance of designated roads and trails will depend on available resources, and many may receive little maintenance.

This motor vehicle use map identifies those roads, trails, and areas designated for the motor vehicle use under 36 CFR 212.51 for the purpose of enforcing the prohibition at 36 CFR 261.13. This is a limited purpose. The other public roads are shown for information and navigation purposes only and are not subject to designation under the Forest Service travel management regulation.

These designations apply only to National Forest System roads, National Forest System trails, and areas on National Forest System lands.

OPERATOR RESPONSIBILITIES

Operating a motor vehicle on National Forest System roads, National Forest System trails, and in areas on National Forest System lands carries a greater responsibility than operating that vehicle in a city or other developed setting. Not only must the motor vehicle operators know and follow all applicable traffic laws, but they need to show concern for the environment as well as other forest users. The misuse of motor vehicles can lead to the temporary or permanent closure of any designated road, trail, or area. Operators of motor vehicles are subject to State traffic law, including State requirements for licensing, registration, and operation of the vehicle in question.

Motor vehicle use, especially off-highway vehicle use, involves inherent risks that may cause property damage, serious injury, and possibly death to participants. Riders should drive cautiously and anticipate rough surfaces and features, such as snow, mud, vegetation, and water crossings common to remote driving conditions. Participants voluntarily assume full responsibility for these damages, risks, and dangers. Motor vehicle operators should take care at all times to protect themselves and those under their responsibility.

Much of the South Park Ranger District is remote, and medical assistance may not be readily available. Cellular telephones do not work in many areas of the South Park Ranger District. Operators should take adequate food, water, first aid supplies, and other equipment appropriate for the conditions and expected weather.

ALWAYS REMEMBER TO RESPECT PRIVATE LAND! PROTECT YOUR PRIVILEGE. STAY ON DESIGNATED ROADS AND TRAILS AND IN DESIGNATED AREAS.

Read and understand this map in its entirety. If you have questions, please contact the South Park Ranger District for clarification.

Road, trail, and area users must comply with this map, as well as all Federal, State, and local laws and regulations. Compliance with these rules is the responsibility of the user.

Legend

- Roads Open to Highway Legal Vehicles
- Roads Open to All Vehicles
- Trails Open to Vehicles 50" or Less in Width
- Trails Open to Motorcycles Only
- Seasonal Designation (See Seasonal Table)
- Interstate
- Highways, US, State, County, Other
- U.S. Highway Route Number
- State Highway Route Number
- County Road Number
- Short Route Identifier (See Short Route Table)
- Major Streams
- Motorized Trailhead
- FS Campground
- Picnic Area
- Peaks
- Forest and District Boundary
- National Forest System Lands
- Non-National Forest System Lands within the National Forest
- Wilderness Areas
- County Boundary
- Township and Range Lines
- Section Lines
- Lakes and Rivers

0 1 2 4 6 Miles

EXPLANATION OF LEGEND ITEMS

Roads Open to Highway Legal Vehicles Only:

Roads open only to motor vehicles licensed under State law for general operation on all public roads.

Roads Open to All Vehicles:

Roads open to all motor vehicles, including smaller off highway vehicles that may not be licensed for highway use (not to oversize or overweight vehicles under State traffic law).

Trails Open to Vehicles 50" or Less in Width:

Trails open only to motor vehicles less than 50 inches in width at the widest point on the vehicle.

Trails Open to Motorcycles Only:

Trails open only to motorcycles. Sidecars are not permitted.

Seasonal Designation:

This symbol, used in conjunction with one of the other road or trail symbols, indicates that the road or trail is open only during certain portions of the year. Refer to Seasonal Designations Table for further instructions.

Other Public Roads and Trails:

Highways, U.S., State, County, Other

Used to show routes not designated for motorized use by the Forest Service. Part of the reference layers showing connections to towns and cities outside the forest boundary.

Short Route Identifier:

857.A

This symbol is used for roads that are too short to show a symbol type on the map. The symbol contains the number of the road or trail. Users should refer to the corresponding number in the Short Route Table for designation information.

Motorized Trail Access:

This symbol indicates a trailhead for access to a motorized route. Not all motorized routes have trailheads and those that do may range from primitive to developed.

PROHIBITIONS

It is prohibited to possess or operate a motor vehicle on National Forest System lands on the South Park Ranger District other than in accordance with these designations (36 CFR 261.13)

Violations of 36 CFR 261.13 are subject to a fine of up to \$5,000 or imprisonment for up to 6 months or both (18 U.S.C. 3571(a)). This prohibition applies to the presence or absence of signs.

This map does not display nonmotorized uses, over-snow uses, or other facilities and attractions on the South Park Ranger District. Obtain forest visitor information from the local National Forest Office.

Designated roads, trails and areas may also be subject to temporary, emergency closures, and visitors must comply with signs notifying them of such restrictions. A national forest may issue an order to close a road, trail or area on a temporary basis to protect the life, health, or safety of forest visitors or the natural or cultural resources in these areas. Such a temporary and/or emergency closures are consistent with the Travel Management Rule (36 CFR 212.52(b); 36 CFR 261 subpart B).

The designation "road or trail open to all motor vehicles" does not supersede State traffic law.

BLANKET STATEMENTS FOR TRAVEL MANAGEMENT

Map Revisions

The designations shown on this map will remain in effect until revised with the publication of a new map. In January of each year, this motor vehicle use map will either be revised with the publication of a new map, or it will be validated for the new year by the Ranger District with a red stamp that says: "Valid for Year 20__".

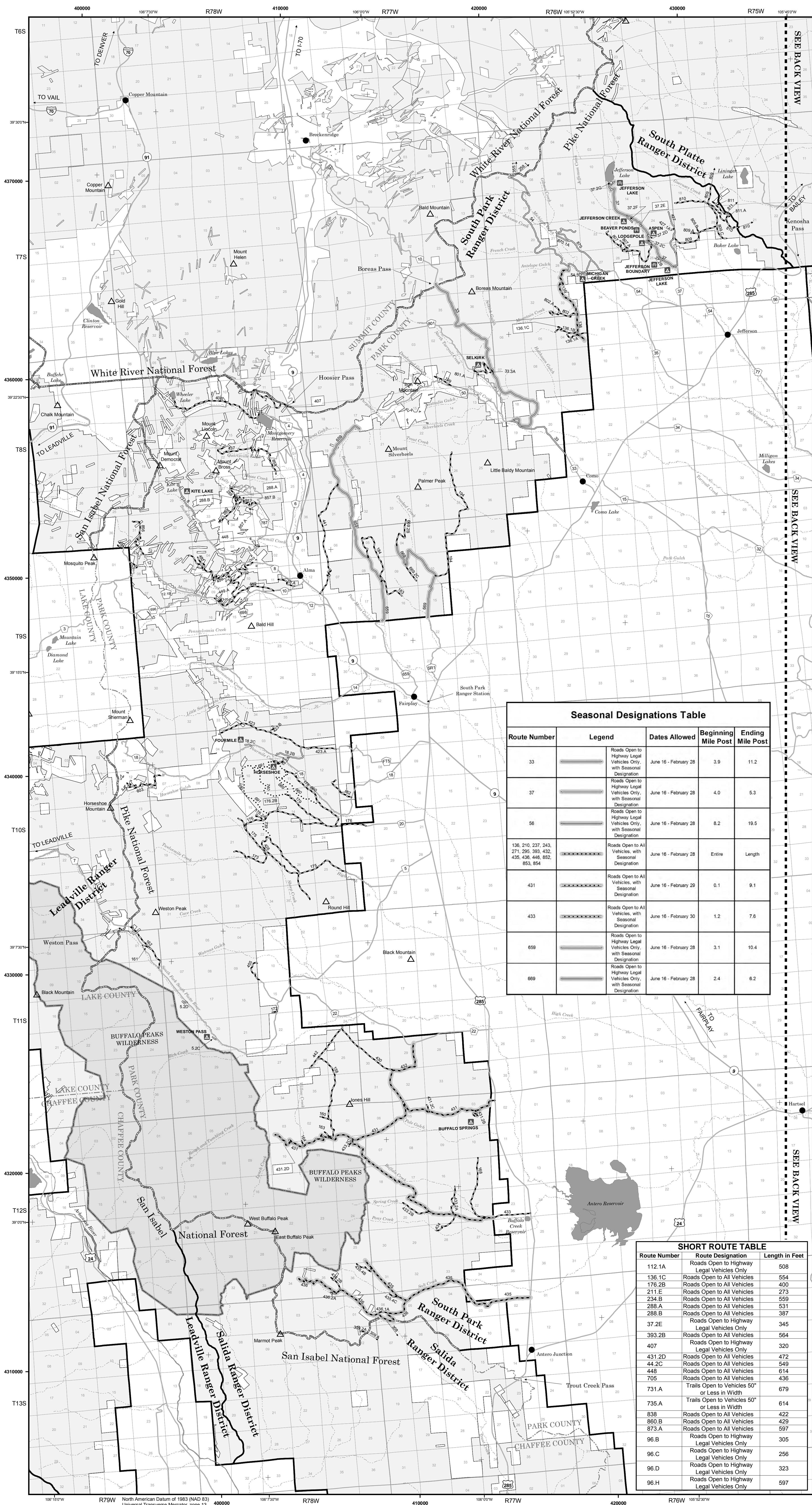
OHV Registrations and Permits

Off-highway vehicles that are operated on National Forest System lands in Colorado must be registered annually with Colorado State Parks. Out-of-state residents who bring OHVs into Colorado must purchase an annual Colorado non-resident OHV permit. See www.parks.state.co.us for more information.

Parking/ Dispersed Camping on the Pike National Forest

- Where designated parking areas are not available, and where not specifically prohibited, unsafe, or causing resource damage, parking on National Forest System lands within one vehicle length off of designated routes is authorized.
- Dispersed camping is authorized on National Forest System lands except in specially designated areas that are closed to camping.
- Motorized dispersed camping is authorized within one vehicle length off of designated National Forest System routes, where not specifically prohibited, unsafe, or causing resource damage.

Check with the local National Forest District office for current information on areas closed to camping and for other travel management information.



Seasonal Designations Table					
Route Number	Legend	Dates Allowed	Beginning Mile Post	Ending Mile Post	
33		Roads Open to Highway Legal Vehicles Only, with Seasonal Designation	June 16 - February 28	3.9	11.2
37		Roads Open to Highway Legal Vehicles Only, with Seasonal Designation	June 16 - February 28	4.0	5.3
56		Roads Open to Highway Legal Vehicles Only, with Seasonal Designation	June 16 - February 28	8.2	19.5
136, 210, 237, 243, 271, 295, 393, 432, 435, 438, 448, 452, 653, 854		Roads Open to All Vehicles, with Seasonal Designation	June 16 - February 28	Entire	Length
431		Roads Open to All Vehicles, with Seasonal Designation	June 16 - February 29	0.1	9.1
433		Roads Open to All Vehicles, with Seasonal Designation	June 16 - February 30	1.2	7.6
659		Roads Open to Highway Legal Vehicles Only, with Seasonal Designation	June 16 - February 28	3.1	10.4
669		Roads Open to Highway Legal Vehicles Only, with Seasonal Designation	June 16 - February 28	2.4	6.2

SHORT ROUTE TABLE		
Route Number	Route Designation	Length in Feet
112.1A	Roads Open to Highway Legal Vehicles Only	508
136.1C	Roads Open to All Vehicles	554
176.2B	Roads Open to All Vehicles	400
211.E	Roads Open to All Vehicles	273
234.B	Roads Open to All Vehicles	359
285.A	Roads Open to All Vehicles	531
288.B	Roads Open to All Vehicles	387
37.2E	Roads Open to Highway Legal Vehicles Only	345
393.2B	Roads Open to All Vehicles	564
407	Roads Open to Highway Legal Vehicles Only	320
431.2D	Roads Open to All Vehicles	472
44.2C	Roads Open to All Vehicles	549
448	Roads Open to All Vehicles	614
705	Roads Open to All Vehicles	436
731.A	Trails Open to Vehicles 50" or Less in Width	679
735.A	Trails Open to Vehicles 50" or Less in Width	614
838	Roads Open to All Vehicles	422
860.B	Roads Open to All Vehicles	429
873.A	Roads Open to All Vehicles	597
96.B	Roads Open to Highway Legal Vehicles Only	305
96.C	Roads Open to Highway Legal Vehicles Only	256
96.D	Roads Open to Highway Legal Vehicles Only	323
96.H	Roads Open to Highway Legal Vehicles Only	597