

United States Department of Agriculture  
Forest Service  
Colorado  
America's Great Outdoors  
Parks District  
National Forest  
Use Map  
Motor Vehicle  
VICINITY MAP

INFORMATION SOURCES  
Medicine Bow - Routt National Forests  
Thunder Basin National Grassland  
Headquarters  
2468 Jackson Street  
Laramie, WY 82070  
Phone: (307) 745-2300  
Parks Ranger District  
100 Main Street  
Walden, CO 80480  
Phone: (970) 723-8204  
Website: www.fs.fed.us/r2/mbr  
In case of emergency, Dial 911

FOREST SERVICE  
U.S.  
DEPARTMENT OF AGRICULTURE  
treadlightly!  
LEAVING A GOOD IMPRESSION  
Travel and recreate with minimum impact.  
Respect the environment and the rights of others.  
Educate yourself plan and prepare before you go.  
Allow for future use of the outdoors by leaving it better than you found it.  
Discover the rewards of responsible recreation.  
For more information on Tread Lightly!, go to  
www.treadlightly.org or call 1-800-966-9900.

The U.S. Department of Agriculture (USDA) prohibits discrimination in all its programs and activities on the basis of race, color, national origin, age, disability, and where applicable, sex, marital status, familial status, parental status, religion, sexual orientation, genetic information, political beliefs, reprisal, or because all or part of an individual's income is derived from any public assistance program. (Not all prohibited bases apply to all programs.) Persons with disabilities who require alternative means for communication of program information (Braille, large print, audiotype, etc.) should contact USDA's TARGET Center at (202) 720-2600 (voice) and (800) 795-3272 (voice) or (202) 720-6382 (TDD). USDA is an equal opportunity provider and employer.

PURPOSE AND CONTENTS OF THIS MAP

The designations shown on this motor vehicle use map are effective as of the date on the front cover and will remain in effect until superseded by the next year's motor vehicle use map. It is the responsibility of the user to acquire the current MVUM. This map shows the National Forest System roads, National Forest System trails, and the areas on National Forest System lands in the Routt National Forest that are designated for motor vehicle use pursuant to 36 Code of Federal Regulations (CFR) 212.51. This map also contains a list of those designated roads, trails, and areas; the types of vehicles that are allowed on each route and in each area, and any seasonal restrictions that apply on those routes and in those areas.

Designation of a road, trail, or area for motor vehicle use by a particular class of vehicle under 36 CFR 212.51 should not be interpreted as encouraging or inviting use or implying that the road, trail or area is passable, actively maintained, or safe for travel. Motor vehicle designations include parking along designated routes and at facilities associated with designated routes when it is safe to do so and when not causing damage to National Forest System resources. Seasonal weather conditions and natural events may render designated routes and trails impassable for extended periods. Designated areas may contain dangerous or impassable terrain. Many designated roads and trails may be passable only by high-clearance vehicles or four-wheel-drive vehicles. Maintenance of designated roads and trails will depend on available resources, and many may receive little maintenance.

This motor vehicle use map identifies those roads, trails, and areas designated for the motor vehicle use under 36 CFR 212.51 for the purpose of enforcing the prohibition at 36 CFR 261.13. This is a limited purpose. The other public roads are shown for information and navigation purposes only and are not subject to designation under the Forest Service travel management regulation.

These designations apply only to National Forest System roads, National Forest System trails, and areas on National Forest System lands.

Legend  
Roads Open to Highway Legal Vehicles  
Roads Open to Vehicles 50" or Less in Width  
Trails Open to Motorcycles Only  
Seasonal Designation (See Table)  
Dispersed Camping (See Table)  
Highways, U.S. State  
Other Public Roads  
Milepost Marker  
Mountain Peaks  
FS Campground  
Motorized Trailhead  
Information Site  
Forest or Unit Boundary  
National Forest System Lands  
Non-National Forest System Lands within the National Forest  
Wilderness Areas  
Lakes and Rivers  
Township and Range Lines  
Section Lines  
0 1 2 3 4 5 Miles  
1:126,720  
12 Inch = 1 mile

EXPLANATION OF LEGEND ITEMS

Roads Open to Highway Legal Vehicles Only:  
These roads are open only to motor vehicles licensed under State law for general operation on all public roads within the state.

Roads Open to All Vehicles:  
These roads are open to all motor vehicles, including smaller off-highway vehicles that may not be licensed for highway use (but not to oversize or overweight vehicles under State traffic law).

Trails Open to Vehicles 50 inches or Less in Width:  
Trails open only to motor vehicles less than 50 inches in width at the widest point on the vehicle.

Trails Open to Motorcycles Only:  
These trails are open only to motorcycles. Sidecars are not permitted.

Seasonal Designation:  
This symbol, used in conjunction with one of the other road or trail symbols, indicates that the road or trail is open only during certain portions of the year. Refer to Seasonal and Special Designation Table for further instructions.

Dispersed Camping/Game Retrieval:  
This symbol is used along with a designated road or trail to indicate limited cross-country motor vehicle use within a specific distance of that route, solely for the purpose of dispersed camping and/or game retrieval. The dots indicate where this activity is permitted. They may be on the left, right, or both sides of the route. Refer to the Dispersed Camping/Game Retrieval Table for specifics.

Other Public Roads and Trails:  
Highways, U.S. State  
Other Public Roads  
These symbols are used to show routes the Forest Service does not have jurisdiction over and has not designated for motorized use. These symbols are part of the reference layers showing connections to towns and cities outside the forest boundary.

Milepost Marker:  
This symbol is used to display the beginning and ending mileposts of a road that has a change in the designation but not the symbology.

Motorized Trail Access:  
This symbol indicates a trailhead for access to a motorized route. Not all motorized routes have trailheads and those that do may range from primitive to developed.

OPERATOR RESPONSIBILITIES

Operating a motor vehicle on National Forest System roads, National Forest System trails, and in areas on National Forest System lands carries a greater responsibility than operating that vehicle in a city or other developed setting. Not only must you know and follow all applicable traffic laws, you need to show concern for the environment as well as other forest users. The misuse of motor vehicles can lead to the temporary or permanent closure of any designated road, trail, or area. As a motor vehicle operator, you are also subject to State traffic law, including State requirements for licensing, registration, and operation of the vehicle in question.

Motor vehicle use, especially off-highway vehicle use, involves inherent risks that may cause property damage, serious injury, and possibly death to participants. Drive cautiously and anticipate rough surfaces and features, such as snow, mud, vegetation, and water crossings common to remote driving conditions. By your participation, you voluntarily assume full responsibility for these damages, risks, and dangers. Take care at all times to protect yourself and those under your responsibility.

Much of the Routt National Forest is remote. Medical assistance may not be readily available. Cellular telephones do not work in many areas of the Routt National Forest. Take adequate food, water, first-aid supplies, and other equipment appropriate for the conditions and expected weather.

ALWAYS REMEMBER TO RESPECT PRIVATE LAND! PROTECT YOUR PRIVILEGE. STAY ON DESIGNATED ROADS AND TRAILS AND IN DESIGNATED AREAS.

Read and understand this map in its entirety. If you have questions, please contact the Routt National Forest for clarification.

As a motor vehicle operator on a National Forest System road, trail, or area you must comply with this map, as well as all Federal, State, and local laws and regulations. Compliance with these rules is your responsibility.

DISPERSED CAMPING

Motor vehicle use off of designated roads for the purpose of dispersed camping is permitted for up to 300 feet from the centerline of the road, allowing the same vehicles as the road allows and the same season as the road is open. This applies to the following roads:

12, 15, 20, 20.1N, 20.12, 22, 43, 44, 90, 60.2A, 80, 82, 82.1A, 86, 100, 100.2E, 101, 101.1A, 103, 103.2A, 103.3A, 103.3D, 104, 106, 107, 111, 112.6, 112.6B, 112.6D, 112.6E, 112.6G, 121, 121.1B, 125, 125.1A, 137, 137.1A, 137.2A, 137.2B, 185, 186, 190, 190

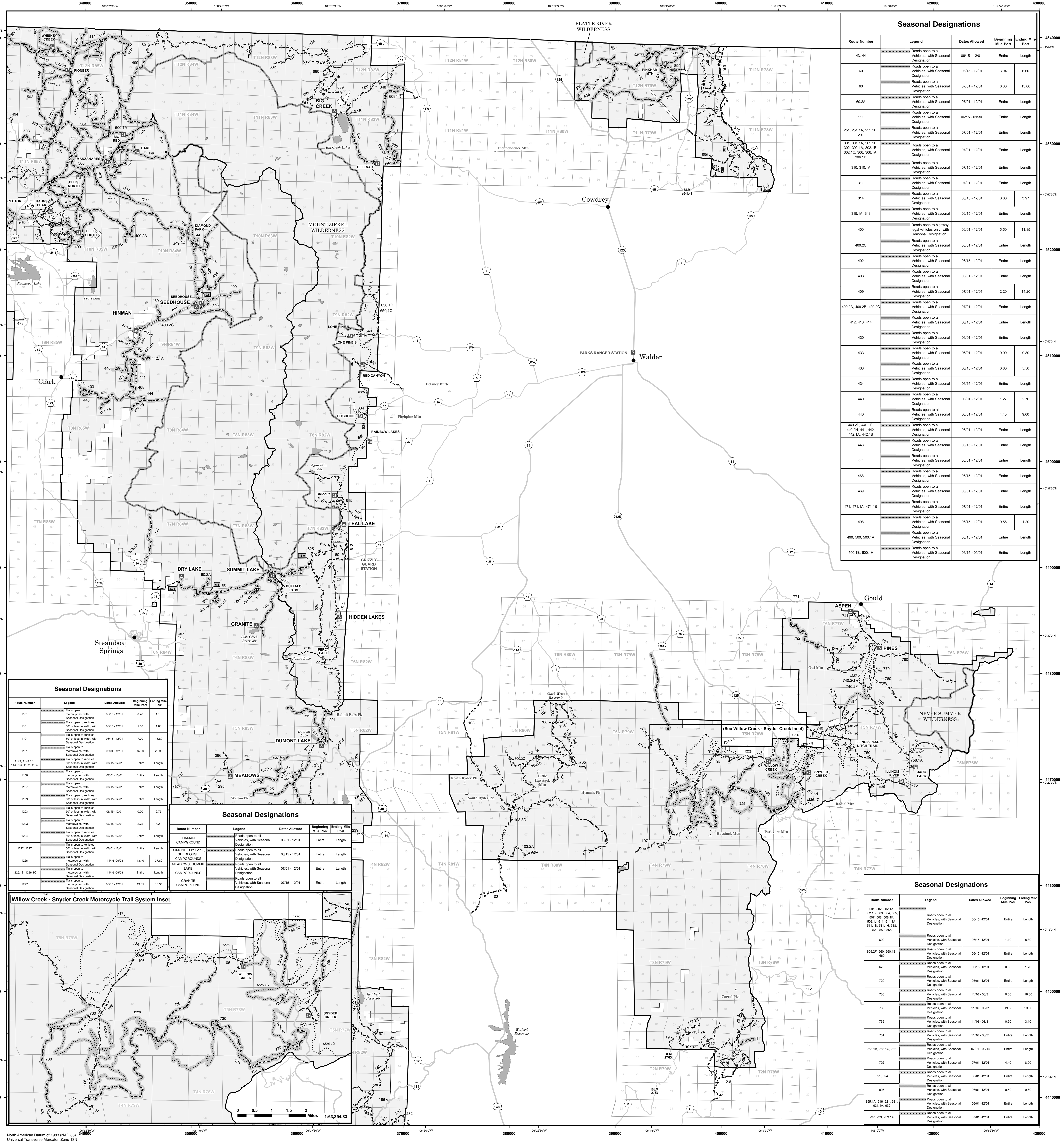
204, 205, 211, 213, 213.2A, 232, 237, 238, 239, 251, 251.1A, 251.1B, 254, 262, 287, 289, 290, 291, 292, 294, 295, 296, 298.1A

301, 301.1A, 301.1B, 302, 302.1A, 302.1B, 302.1C, 304, 306, 306.1A, 306.1B, 307, 307.1A, 308, 310, 310.1A, 311, 312, 313, 314, 315, 348, 400.2C, 402, 403, 408, 409, 409.2B, 409.2C, 410, 411, 412, 413, 414, 418, 429, 430, 433, 434, 440, 440.2D, 440.2H, 441, 442, 442.1A, 442.15, 443, 444, 448, 469, 471, 471.1A, 471.1B, 475, 490, 494, 499, 500, 500.1A, 500.1B, 500.1H, 501, 502, 502.1A, 502.1B, 503, 504, 505, 507, 508, 508.1F, 508.1A, 511, 511.1A, 511.1B, 511.5H, 516, 516.1E, 516, 520, 550, 555, 571

600, 608, 609.2F, 612, 613, 615, 616, 619, 620, 623, 625, 626, 627, 634, 634.2A, 635, 640, 640.2A, 650, 650.1C, 650.1D, 650.1E, 652, 660, 660.1B, 669, 680, 691, 691.1A, 692, 692, 698, 699.1A, 699, 699.1B, 699.1C, 699.1D, 700, 700.2A, 700.2B, 700.2C, 700.2E, 700.2F, 701, 702, 703, 704, 705, 708, 713, 715, 720, 721, 724, 730, 730.1B, 732, 734, 734.1A, 735, 736, 740, 740.2C, 740.2H, 740.2E, 740.2F, 740.2G, 741, 742, 743, 750, 751, 755, 755.1A, 756, 756.1B, 756, 756.1C, 756, 756.1A, 760, 765, 766, 769, 770, 770.1B, 787, 789, 790, 791, 792, 793

876, 879, 880, 881, 882, 884, 885, 888, 889.1A, 889.1B, 891, 894, 895, 895.1A, 896, 898

916, 921, 931, 931.1A, 932, 937, 939, 939.1A, 996, 996.1A



Seasonal Designations					
Route Number	Legend	Dates Allowed	Beginning Mile Post	Ending Mile Post	
43, 44	Roads open to all Vehicles, with Seasonal Designation	06/15 - 12/01	Entire	Length	
60	Roads open to all Vehicles, with Seasonal Designation	06/15 - 12/01	3.04	6.60	
60	Roads open to all Vehicles, with Seasonal Designation	07/01 - 12/01	6.60	15.00	
60.2A	Roads open to all Vehicles, with Seasonal Designation	07/01 - 12/01	Entire	Length	
111	Roads open to all Vehicles, with Seasonal Designation	06/15 - 08/30	Entire	Length	
251, 251.1A, 251.1B, 291	Roads open to all Vehicles, with Seasonal Designation	07/01 - 12/01	Entire	Length	
301, 301.1A, 301.1B, 302, 302.1A, 302.1B, 302.1C, 306, 306.1A, 306.1B	Roads open to all Vehicles, with Seasonal Designation	07/01 - 12/01	Entire	Length	
310, 310.1A	Roads open to all Vehicles, with Seasonal Designation	07/15 - 12/01	Entire	Length	
311	Roads open to all Vehicles, with Seasonal Designation	07/01 - 12/01	Entire	Length	
314	Roads open to all Vehicles, with Seasonal Designation	06/15 - 12/01	0.80	3.97	
316.1A, 348	Roads open to all Vehicles, with Seasonal Designation	06/15 - 12/01	Entire	Length	
400	Roads open to all Vehicles, with Seasonal Designation	06/01 - 12/01	5.50	11.85	
400.2C	Roads open to all Vehicles, with Seasonal Designation	06/01 - 12/01	Entire	Length	
402	Roads open to all Vehicles, with Seasonal Designation	06/15 - 12/01	Entire	Length	
403	Roads open to all Vehicles, with Seasonal Designation	06/01 - 12/01	Entire	Length	
409	Roads open to all Vehicles, with Seasonal Designation	07/01 - 12/01	2.30	14.30	
409.2A, 409.2B, 409.2C	Roads open to all Vehicles, with Seasonal Designation	07/01 - 12/01	Entire	Length	
412, 413, 414	Roads open to all Vehicles, with Seasonal Designation	06/15 - 12/01	Entire	Length	
430	Roads open to all Vehicles, with Seasonal Designation	06/01 - 12/01	Entire	Length	
433	Roads open to all Vehicles, with Seasonal Designation	06/01 - 12/01	0.00	0.80	
433	Roads open to all Vehicles, with Seasonal Designation	06/15 - 12/01	0.80	5.50	
434	Roads open to all Vehicles, with Seasonal Designation	06/15 - 12/01	Entire	Length	
440	Roads open to all Vehicles, with Seasonal Designation	06/01 - 12/01	1.27	2.70	
440	Roads open to all Vehicles, with Seasonal Designation	06/01 - 12/01	4.45	9.00	
440.2D, 440.2E, 440.2H, 441, 442, 442.1A, 442.1B	Roads open to all Vehicles, with Seasonal Designation	06/01 - 12/01	Entire	Length	
443	Roads open to all Vehicles, with Seasonal Designation	06/15 - 12/01	Entire	Length	
444	Roads open to all Vehicles, with Seasonal Designation	06/01 - 12/01	Entire	Length	
468	Roads open to all Vehicles, with Seasonal Designation	06/15 - 12/01	Entire	Length	
469	Roads open to all Vehicles, with Seasonal Designation	06/01 - 12/01	Entire	Length	
471, 471.1A, 471.1B	Roads open to all Vehicles, with Seasonal Designation	07/01 - 12/01	Entire	Length	
498	Roads open to all Vehicles, with Seasonal Designation	06/15 - 12/01	0.56	1.20	
498, 500, 500.1A	Roads open to all Vehicles, with Seasonal Designation	06/15 - 12/01	Entire	Length	
500.1B, 500.1H	Roads open to all Vehicles, with Seasonal Designation	06/15 - 09/01	Entire	Length	

Seasonal Designations					
Route Number	Legend	Dates Allowed	Beginning Mile Post	Ending Mile Post	
501, 502, 502.1A, 502.1B, 502, 504, 504.2D, 504, 508, 508.1F, 508, 510, 511, 511.1A, 511.1B, 511, 511.1H, 516, 516.1C, 500, 500.2	Roads open to all Vehicles, with Seasonal Designation	06/15 - 12/01	Entire	Length	
609	Roads open to all Vehicles, with Seasonal Designation	06/15 - 12/01	1.10	8.80	
600.2F, 600, 600.1B, 609	Roads open to all Vehicles, with Seasonal Designation	06/15 - 12/01	Entire	Length	
670	Roads open to all Vehicles, with Seasonal Designation	06/15 - 12/01	0.60	1.70	
720	Roads open to all Vehicles, with Seasonal Designation	05/01 - 12/01	Entire	Length	
730	Roads open to all Vehicles, with Seasonal Designation	11/16 - 06/31	0.00	18.30	
730	Roads open to all Vehicles, with Seasonal Designation	11/16 - 06/31	18.50	23.90	
735	Roads open to all Vehicles, with Seasonal Designation	11/16 - 06/31	0.50	3.10	
751	Roads open to all Vehicles, with Seasonal Designation	11/16 - 06/31	Entire	Length	
756.1B, 756.1C, 756	Roads open to all Vehicles, with Seasonal Designation	07/01 - 12/14	Entire	Length	
792	Roads open to all Vehicles, with Seasonal Designation	07/01 - 12/01	4.40	8.00	
891, 894	Roads open to all Vehicles, with Seasonal Designation	06/01 - 12/01	Entire	Length	
895	Roads open to all Vehicles, with Seasonal Designation	06/01 - 12/01	0.50	5.60	
895.1A, 895, 901, 901.1A, 932	Roads open to all Vehicles, with Seasonal Designation	06/01 - 12/01	Entire	Length	
937, 939, 939.1A	Roads open to all Vehicles, with Seasonal Designation	07/01 - 12/01	Entire	Length	