


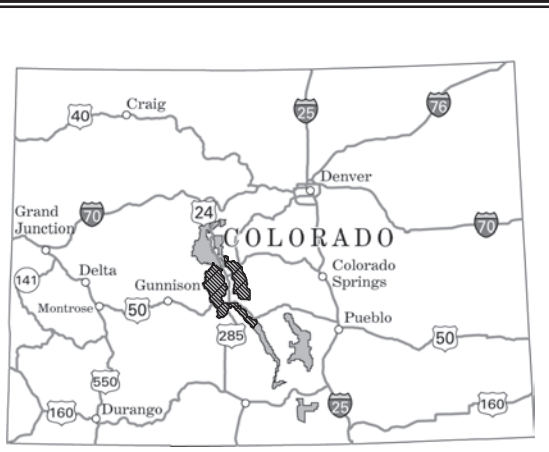
FOREST SERVICE
DEPARTMENT OF AGRICULTURE
COLORADO
2010

America's Great Outdoors



Ranger District
Salida
National Forest
Use Map
Motor Vehicle

VICINITY MAP



INFORMATION SOURCES

Salida Ranger District
325 West Rainbow Blvd.
Salida, CO 81201
(719) 539-3591

Forest Supervisor
Pike and San Isabel National Forests
Cimarron and Comanche National
Crosslands
2840 Kachina Drive
Pueblo, CO 81008
(719) 553-1400

In case of Emergency: Dial 911
Salida Ranger District Website:
<http://fs.usda.gov/pio/psr/sal>



treedlightly!

Travel and recreate with minimum impact.

Respect the environment and the rights of others.

Educate yourself plan and prepare before you go.

Allow for future use of the outdoors by leaving it better than you found it.

Discover the rewards of responsible recreation.

For more information on Treedlightly, go to www.treedlightly.org or call 1-800-966-9900.

The U.S. Department of Agriculture (USDA) prohibits discrimination in all its programs and activities on the basis of race, color, national origin, age, disability, and where applicable, sex, marital status, familial status, parental status, religion, sexual orientation, genetic information, political beliefs, reprisal, or because all or part of an individual's income is derived from any public assistance program. (Not all prohibited bases apply to all programs.) Persons with disabilities who require alternative means for communication of program information (Braille, large print, audiotape, etc.) should contact USDA's TARGET Center at (202) 720-2600 (voice and TDD). To file a complaint of discrimination, write to USDA, Director, Office of Civil Rights, 1400 Independence Avenue, S.W., Washington, D.C. 20250-9410, or call (800) 795-3272 (voice) or (202) 720-6362 (TDD). USDA is an equal opportunity provider and employer.

PURPOSE AND CONTENTS OF THIS MAP

The designations shown on this map are effective as of the date stamped or printed on the front cover. This map shows the National Forest System roads, National Forest System trails, and the areas on National Forest System lands in the Salida Ranger District that are designated for motor vehicle use pursuant to 36 CFR 212.51. This map also contains a list of those designated roads, trails, and areas that enumerates the types of vehicles that are allowed on each route and in each area and any seasonal restrictions that apply on those routes and in those areas.

Designation of a road, trail, or area for motor vehicle use by a particular class of vehicle under 36 CFR 212.51 should not be interpreted as encouraging or inviting use, or to imply that the road, trail or area is passable, actively maintained, or safe for travel. Motor vehicle designations include parking along designated routes and at facilities associated with designated routes when it is safe to do so and when not causing damage to National Forest System resources. Seasonal weather conditions and natural events may render designated routes and trails impassable for extended periods. Designated areas may contain dangerous or impassable terrain. Many designated roads and trails may be passable only by high-clearance vehicles or four-wheel drive vehicles. Maintenance of designated roads and trails will depend on available resources, and many may receive little maintenance.

This motor vehicle use map identifies those roads, trails, and areas designated for the motor vehicle use under 36 CFR 212.51 for the purpose of enforcing the prohibition at 36 CFR 261.13. This is a limited purpose. The other public roads are shown for information and navigation purposes only and are not subject to designation under the Forest Service travel management regulation.

These designations apply only to National Forest System roads, National Forest System trails, and areas on National Forest System lands.

Legend

- Roads Open to All Vehicles
- Trails Open to Vehicles 50' or Less in Width
- Trails Open to Motorcycles Only
- Seasonal Designation (See Table)
- Highways, U.S. State, County, Other
- U.S. Highway Route Number
- State Highway Route Number
- County Road Number
- Other Public Trails
- Short Route Identifier (See Short Route Table)
- Major Streams
- Motorized Trailhead
- FS Campground
- Picnic Area
- Peaks
- Forest or Unit Boundary
- National Forest System Lands
- Non-National Forest System Lands within the National Forest
- Wilderness Areas
- County Boundary
- Township and Range Lines
- Section Lines
- Lakes and Rivers

Scale: 0 0.5 1 2 3 4 Miles

EXPLANATION OF LEGEND ITEMS

Roads Open to All Vehicles:
Roads open to all motor vehicles, including smaller off-highway vehicles that may not be licensed for highway use (not to oversize or overweight vehicles under State traffic law).

Trails Open to Vehicles 50' or Less in Width:
Trails open only to motor vehicles less than 50 inches in width at the widest point on the vehicle.

Trails Open to Motorcycles Only:
Trails open only to motorcycles. Sidecars are not permitted.

Seasonal Designation:
The symbol, used in conjunction with one of the other road or trail symbols, indicates that the road or trail is open only during certain portions of the year. Refer to Seasonal Designations Table for further instructions.

Other Public Roads and Trails:
Highways, U.S., State, County, Other
Other Public Trails
Used to show routes not designated for motorized use by the Forest Service. Part of the reference layers showing connectors to towns and cities outside the forest boundary.

Short Route Identifier:
This symbol is used for roads that are too short to show a symbol type on the map. The symbol contains the number of the road or trail. Users should refer to the corresponding number in the Short Route Table for designation information.

Motorized Trail Access:
This symbol indicates a trailhead for access to a motorized route. Not all motorized routes have trailheads and those that do may range from primitive to developed.

PROHIBITIONS

It is prohibited to possess or operate a motor vehicle on National Forest System lands in the Salida Ranger District other than in accordance with these designations (36 CFR 261.13).

Violations of 36 CFR 261.13 are subject to a fine of up to \$5,000 or imprisonment for up to 6 months or both (18 U.S.C. 3671(a)). The prohibition applies regardless of the presence or absence of signs.

This map does not display nonmotorized uses, over-snow uses, or other facilities and attractions on the Salida Ranger District. Obtain forest visitor information from the local National Forest Office.

Designated roads, trails and areas may also be subject to temporary, emergency closures, and visitors must comply with signs notifying them of such restrictions. A national forest may issue an order to close a road, trail or area on a temporary basis to protect the life, health, or safety of forest visitors or the natural or cultural resources in these areas. Such a temporary and/or emergency closure is consistent with the Travel Management Rule (36 CFR 212.52(b)); 36 CFR 261.13 support it.

The designation "road or trail open to all motor vehicles" does not supersede State traffic law.

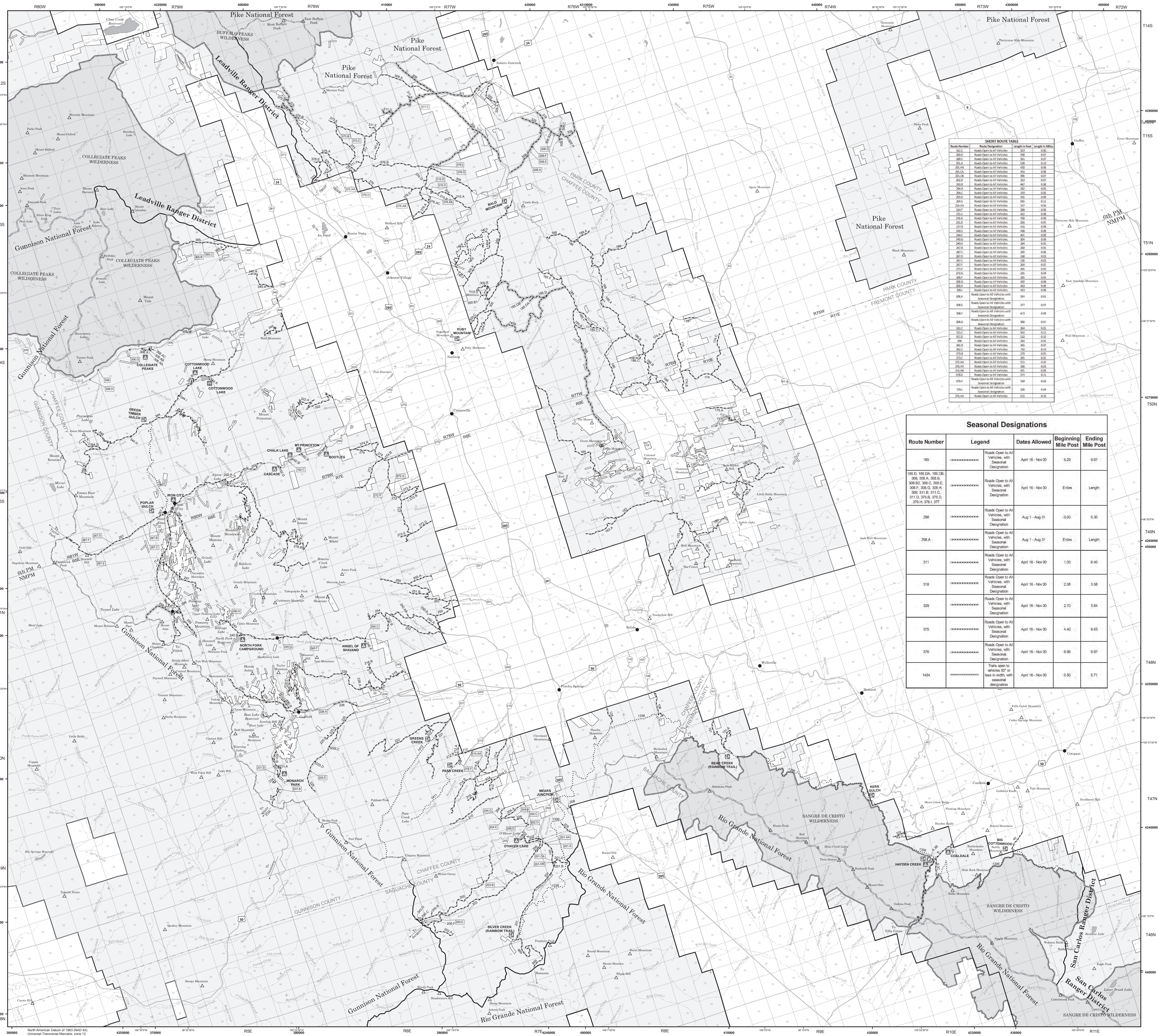
BLANKET STATEMENTS FOR TRAVEL MANAGEMENT

Map Revisions

The designations shown on this map will remain in effect until revised with the publication of a new map. In January of each year, this motor vehicle use map will either be revised with the publication of a new map, or it will be validated for the new year by the Ranger District with a red stamp that says: "Valid for Year 20__".

Parking/Dispersed Camping on the San Isabel National Forest

- Where designated parking areas are not available, and where not specifically prohibited, unsafe, or causing resource damage, parking on National Forest System lands within one vehicle length off of designated routes is authorized.
- Dispersed camping is authorized on National Forest System lands except in specially designated areas that are closed to camping.
- Motorized dispersed camping is authorized within one vehicle length off of designated National Forest System routes, where not specifically prohibited, unsafe, or causing resource damage.
- Check with the local National Forest District office for current information on areas closed to camping and for other travel management information.



SHORT ROUTE TABLE

Route Number	Short Route Description	Length in Miles
202.C	Road Open to All Vehicles	375
202.D	Road Open to All Vehicles	376
202.E	Road Open to All Vehicles	377
202.F	Road Open to All Vehicles	378
202.G	Road Open to All Vehicles	379
202.H	Road Open to All Vehicles	380
202.I	Road Open to All Vehicles	381
202.J	Road Open to All Vehicles	382
202.K	Road Open to All Vehicles	383
202.L	Road Open to All Vehicles	384
202.M	Road Open to All Vehicles	385
202.N	Road Open to All Vehicles	386
202.O	Road Open to All Vehicles	387
202.P	Road Open to All Vehicles	388
202.Q	Road Open to All Vehicles	389
202.R	Road Open to All Vehicles	390
202.S	Road Open to All Vehicles	391
202.T	Road Open to All Vehicles	392
202.U	Road Open to All Vehicles	393
202.V	Road Open to All Vehicles	394
202.W	Road Open to All Vehicles	395
202.X	Road Open to All Vehicles	396
202.Y	Road Open to All Vehicles	397
202.Z	Road Open to All Vehicles	398
203.A	Road Open to All Vehicles	399
203.B	Road Open to All Vehicles	400
203.C	Road Open to All Vehicles	401
203.D	Road Open to All Vehicles	402
203.E	Road Open to All Vehicles	403
203.F	Road Open to All Vehicles	404
203.G	Road Open to All Vehicles	405
203.H	Road Open to All Vehicles	406
203.I	Road Open to All Vehicles	407
203.J	Road Open to All Vehicles	408
203.K	Road Open to All Vehicles	409
203.L	Road Open to All Vehicles	410
203.M	Road Open to All Vehicles	411
203.N	Road Open to All Vehicles	412
203.O	Road Open to All Vehicles	413
203.P	Road Open to All Vehicles	414
203.Q	Road Open to All Vehicles	415
203.R	Road Open to All Vehicles	416
203.S	Road Open to All Vehicles	417
203.T	Road Open to All Vehicles	418
203.U	Road Open to All Vehicles	419
203.V	Road Open to All Vehicles	420
203.W	Road Open to All Vehicles	421
203.X	Road Open to All Vehicles	422
203.Y	Road Open to All Vehicles	423
203.Z	Road Open to All Vehicles	424
204.A	Road Open to All Vehicles	425
204.B	Road Open to All Vehicles	426
204.C	Road Open to All Vehicles	427
204.D	Road Open to All Vehicles	428
204.E	Road Open to All Vehicles	429
204.F	Road Open to All Vehicles	430
204.G	Road Open to All Vehicles	431
204.H	Road Open to All Vehicles	432
204.I	Road Open to All Vehicles	433
204.J	Road Open to All Vehicles	434
204.K	Road Open to All Vehicles	435
204.L	Road Open to All Vehicles	436
204.M	Road Open to All Vehicles	437
204.N	Road Open to All Vehicles	438
204.O	Road Open to All Vehicles	439
204.P	Road Open to All Vehicles	440
204.Q	Road Open to All Vehicles	441
204.R	Road Open to All Vehicles	442
204.S	Road Open to All Vehicles	443
204.T	Road Open to All Vehicles	444
204.U	Road Open to All Vehicles	445
204.V	Road Open to All Vehicles	446
204.W	Road Open to All Vehicles	447
204.X	Road Open to All Vehicles	448
204.Y	Road Open to All Vehicles	449
204.Z	Road Open to All Vehicles	450
205.A	Road Open to All Vehicles	451
205.B	Road Open to All Vehicles	452
205.C	Road Open to All Vehicles	453
205.D	Road Open to All Vehicles	454
205.E	Road Open to All Vehicles	455
205.F	Road Open to All Vehicles	456
205.G	Road Open to All Vehicles	457
205.H	Road Open to All Vehicles	458
205.I	Road Open to All Vehicles	459
205.J	Road Open to All Vehicles	460
205.K	Road Open to All Vehicles	461
205.L	Road Open to All Vehicles	462
205.M	Road Open to All Vehicles	463
205.N	Road Open to All Vehicles	464
205.O	Road Open to All Vehicles	465
205.P	Road Open to All Vehicles	466
205.Q	Road Open to All Vehicles	467
205.R	Road Open to All Vehicles	468
205.S	Road Open to All Vehicles	469
205.T	Road Open to All Vehicles	470
205.U	Road Open to All Vehicles	471
205.V	Road Open to All Vehicles	472
205.W	Road Open to All Vehicles	473
205.X	Road Open to All Vehicles	474
205.Y	Road Open to All Vehicles	475
205.Z	Road Open to All Vehicles	476
206.A	Road Open to All Vehicles	477
206.B	Road Open to All Vehicles	478
206.C	Road Open to All Vehicles	479
206.D	Road Open to All Vehicles	480
206.E	Road Open to All Vehicles	481
206.F	Road Open to All Vehicles	482
206.G	Road Open to All Vehicles	483
206.H	Road Open to All Vehicles	484
206.I	Road Open to All Vehicles	485
206.J	Road Open to All Vehicles	486
206.K	Road Open to All Vehicles	487
206.L	Road Open to All Vehicles	488
206.M	Road Open to All Vehicles	489
206.N	Road Open to All Vehicles	490
206.O	Road Open to All Vehicles	491
206.P	Road Open to All Vehicles	492
206.Q	Road Open to All Vehicles	493
206.R	Road Open to All Vehicles	494
206.S	Road Open to All Vehicles	495
206.T	Road Open to All Vehicles	496
206.U	Road Open to All Vehicles	497
206.V	Road Open to All Vehicles	498
206.W	Road Open to All Vehicles	499
206.X	Road Open to All Vehicles	500
206.Y	Road Open to All Vehicles	501
206.Z	Road Open to All Vehicles	502

Seasonal Designations

Route Number	Legend	Dates Allowed	Beginning Mile Post	Ending Mile Post
185	Roads Open to All Vehicles, with Seasonal Designation	April 16 - Nov 30	5.29	9.87
186.D, 186.DA, 186.DB, 308, 308.A, 308.B, 308.C, 308.E, 308.F, 308.G, 308.H, 308.I, 311.C, 311.D, 375.B, 375.D, 376.A, 376.I, 377	Roads Open to All Vehicles, with Seasonal Designation	April 16 - Nov 30	Entire	Length
298	Roads Open to All Vehicles, with Seasonal Designation	Aug 1 - Aug 31	0.00	0.30
298.A	Roads Open to All Vehicles, with Seasonal Designation	Aug 1 - Aug 31	Entire	Length
311	Roads Open to All Vehicles, with Seasonal Designation	April 16 - Nov 30	1.00	6.40
318	Roads Open to All Vehicles, with Seasonal Designation	April 16 - Nov 30	2.58	3.58
320	Roads Open to All Vehicles, with Seasonal Designation	April 16 - Nov 30	2.70	3.84
375	Roads Open to All Vehicles, with Seasonal Designation	April 16 - Nov 30	4.40	6.63
376	Roads Open to All Vehicles, with Seasonal Designation	April 16 - Nov 30	6.96	9.67
1434	Trails open to vehicles 50' or less in width, with seasonal designation	April 16 - Nov 30	0.50	5.71