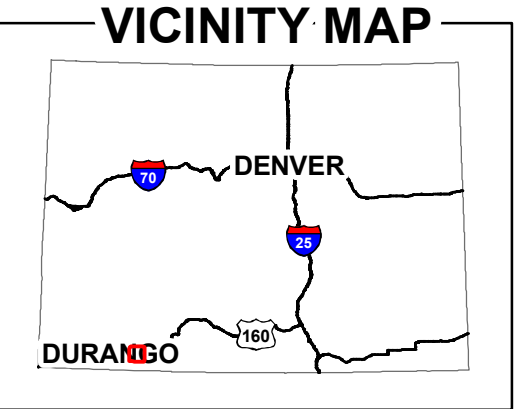


This map is meant to be used to identify open roads and trails and as a supplement to other maps such as the Forest Visitor Map, or a USGS Topographic map. IT IS NOT INTENDED TO BE USED SOLELY FOR NAVIGATION.

Vehicles used for off-highway recreation on all public lands must comply with Colorado law requiring the registration of all terrain vehicles (ATVs), unlicensed motorcycles (dirt bikes), and unlicensed four-wheel drives. Registration fees fund the Colorado OHV Program. For more information go to: <http://parks.state.co.us/>

Motorized access off of designated routes for various permitted activities (such as livestock operations, minerals exploration, timber sales, firewood cutting, recreation special uses, etc.) is allowed under the specific terms and conditions of the permit and/or contract.

Designated routes open to motorized use are represented by the symbols in the legend. All other routes are closed to motorized use.



BEAVER MEADOWS AND SAULS CREEK TRAVEL MAP

San Juan National Forest

Columbine Ranger District



September 2011

Columbine Ranger District
367 Pearl St
Bayfield, CO 81122
970-884-2512



Legend

- Day Use Area
- Campground
- Landscape Boundary - Travel Restricted to Designated Routes
- Dispersed Camping - See Note Below
- Roads Open to All Vehicles, Yearlong
- Roads Open to All Vehicles, Seasonal
- Roads Open to Highway Legal Vehicles Only, Yearlong
- State or US Highway
- Other Public Roads
- Trails Open to Wheeled Vehicles Only < 50" or Less in Width, Seasonal
- Cities and Towns
- Non-Forest Service Lands

DISPERSED CAMPING

Motor vehicle use off of designated roads for the purpose of dispersed camping is permitted on NFS lands for up to 300 feet from the centerline of the road unless other restrictions apply.

PURPOSE AND CONTENTS OF THIS MAP

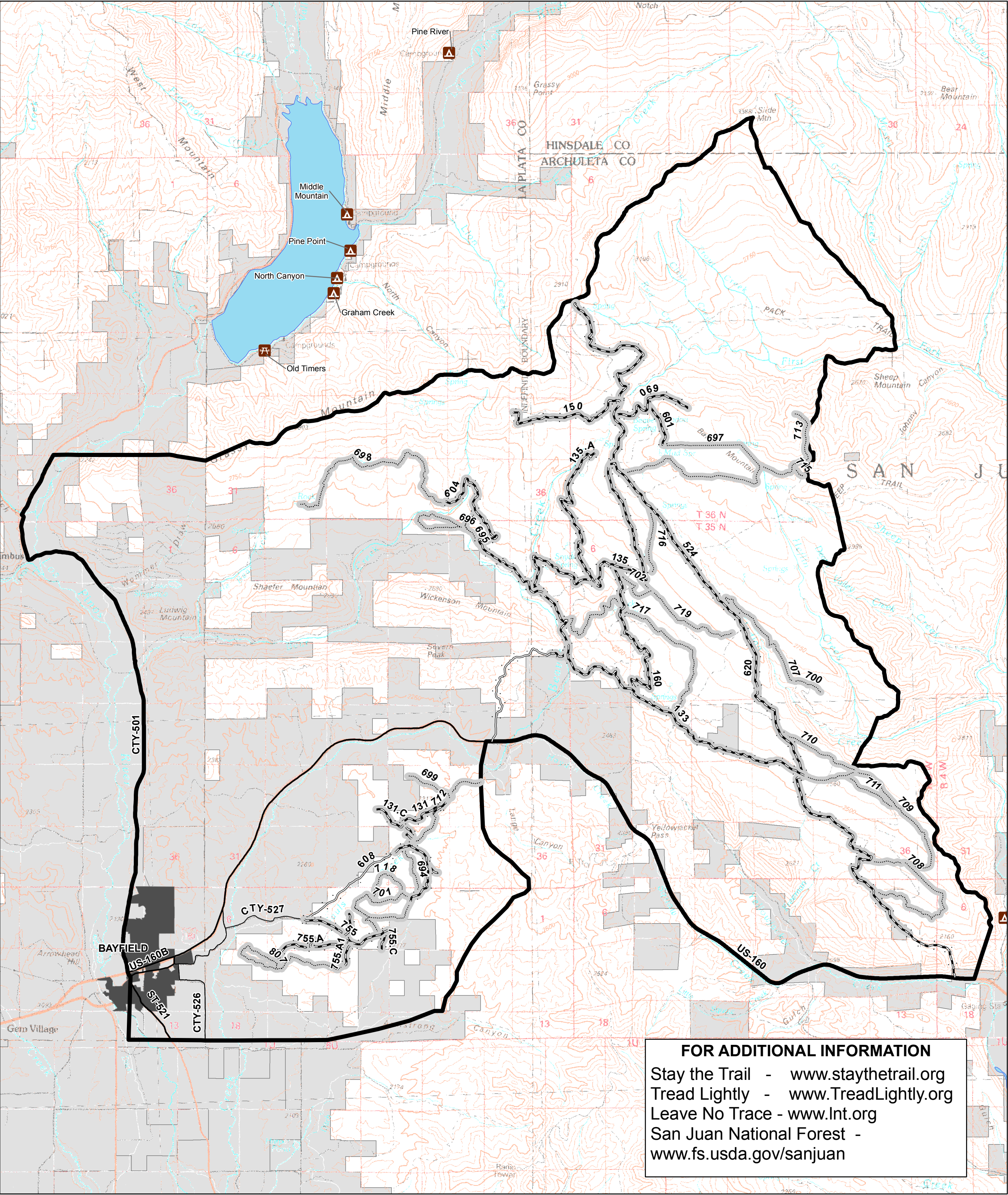
This map dated 9/2011 shows National Forest System Roads, and National Forest System Trails in the Sauls Creek and Beaver Meadows Travel Management Area. These lands are managed by the Columbine Ranger District of the San Juan National Forest.

Every effort has been made to standardize signage on roads and trails. Roads that are open for motorized use are displayed with a sign (typically a road number and/or road name). Trail users should pay close attention to signs, especially the symbols explaining what the route is open to.

All trail users are expected to follow ethics associated with Leave No Trace and Tread Lightly! Programs, such as: recognizing when trails are too wet and muddy for use; staying on designated trails and not creating new ones; no cutting switchbacks; and packing-out what you pack-in.

All summer motor vehicle use is restricted to the designated routes shown on this map, and CROSS COUNTRY TRAVEL IS PROHIBITED. Any road or trail not on this Travel Map is officially closed to motorized use. This map is not intended to display winter travel designations.

The U.S. Department of Agriculture (USDA) prohibits discrimination in all its programs and activities on the basis of race, color, national origin, age, disability, and where applicable, sex marital status, familial status, parental status, religion, sexual orientation, genetic information, political beliefs, reprisal, or because all or part of an individuals income is derived from any public assistance program. (Not all prohibited bases apply to all programs.) Persons with disabilities who require alternative means for communication of program information (Braille, large print, audio tape, ect.) should contact USDA'S TARGET Center at (202) 720-2600 (voice and TDD). To file a complaint of discrimination, write to USDA, Director, Office of Civil Rights, 1400 Independence Avenue, S.W., Washington, D.C.



FOR ADDITIONAL INFORMATION
Stay the Trail - www.staythetrail.org
Tread Lightly - www.TreadLightly.org
Leave No Trace - www.lnt.org
San Juan National Forest - www.fs.usda.gov/sanjuan