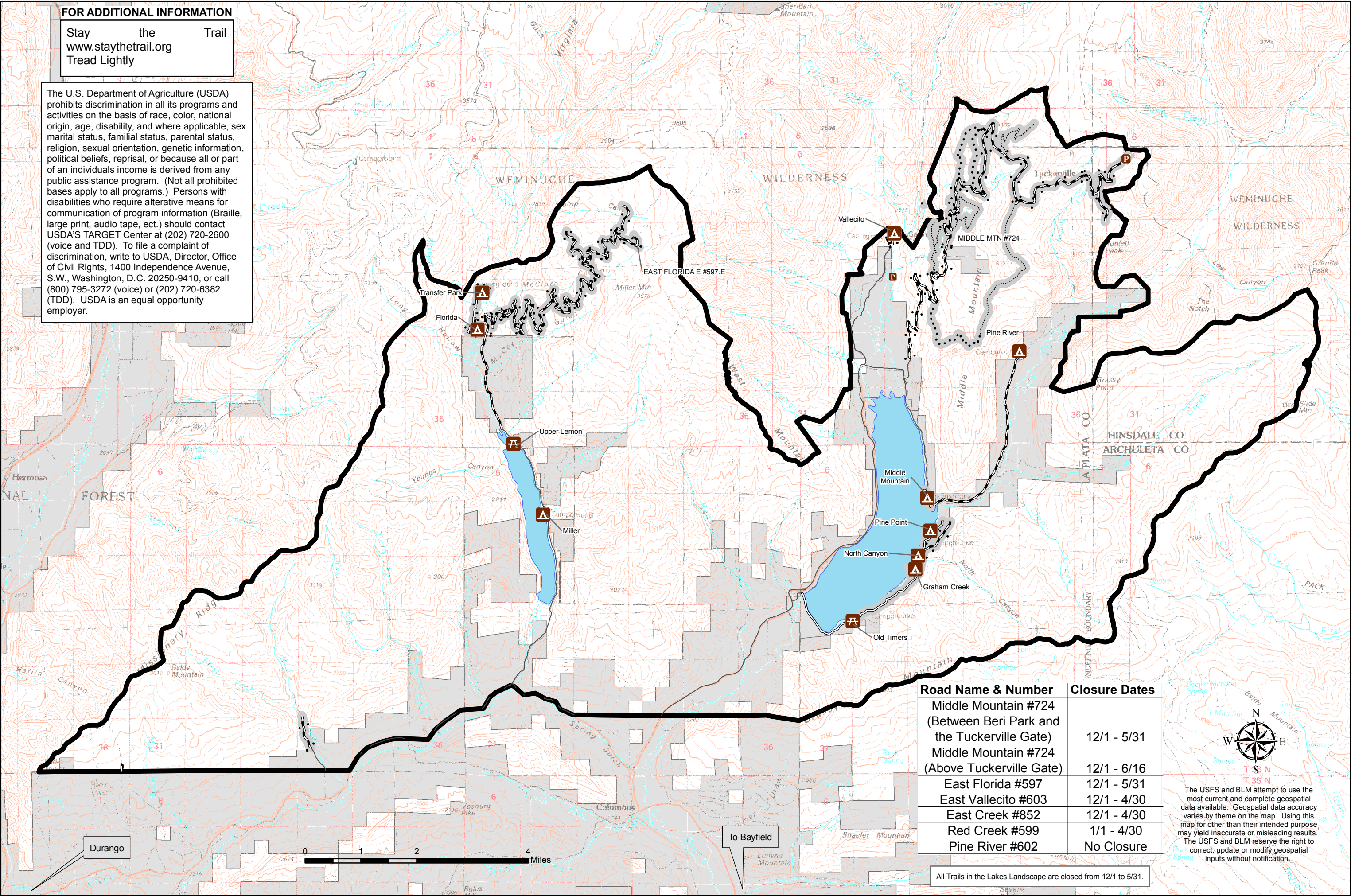


FOR ADDITIONAL INFORMATION

Stay the Trail
www.staythetrail.org
Tread Lightly

The U.S. Department of Agriculture (USDA) prohibits discrimination in all its programs and activities on the basis of race, color, national origin, age, disability, and where applicable, sex marital status, familial status, parental status, religion, sexual orientation, genetic information, political beliefs, reprisal, or because all or part of an individuals income is derived from any public assistance program. (Not all prohibited bases apply to all programs.) Persons with disabilities who require alternative means for communication of program information (Braille, large print, audio tape, ect.) should contact USDA'S TARGET Center at (202) 720-2600 (voice and TDD). To file a complaint of discrimination, write to USDA, Director, Office of Civil Rights, 1400 Independence Avenue, S.W., Washington, D.C. 20250-9410, or call (800) 795-3272 (voice) or (202) 720-6382 (TDD). USDA is an equal opportunity employer.



Road Name & Number	Closure Dates
Middle Mountain #724 (Between Beri Park and the Tuckerville Gate)	12/1 - 5/31
Middle Mountain #724 (Above Tuckerville Gate)	12/1 - 6/16
East Florida #597	12/1 - 5/31
East Vallecito #603	12/1 - 4/30
East Creek #852	12/1 - 4/30
Red Creek #599	1/1 - 4/30
Pine River #602	No Closure

The USFS and BLM attempt to use the most current and complete geospatial data available. Geospatial data accuracy varies by theme on the map. Using this map for other than their intended purpose may yield inaccurate or misleading results. The USFS and BLM reserve the right to correct, update or modify geospatial inputs without notification.

All Trails in the Lakes Landscape are closed from 12/1 to 5/31.