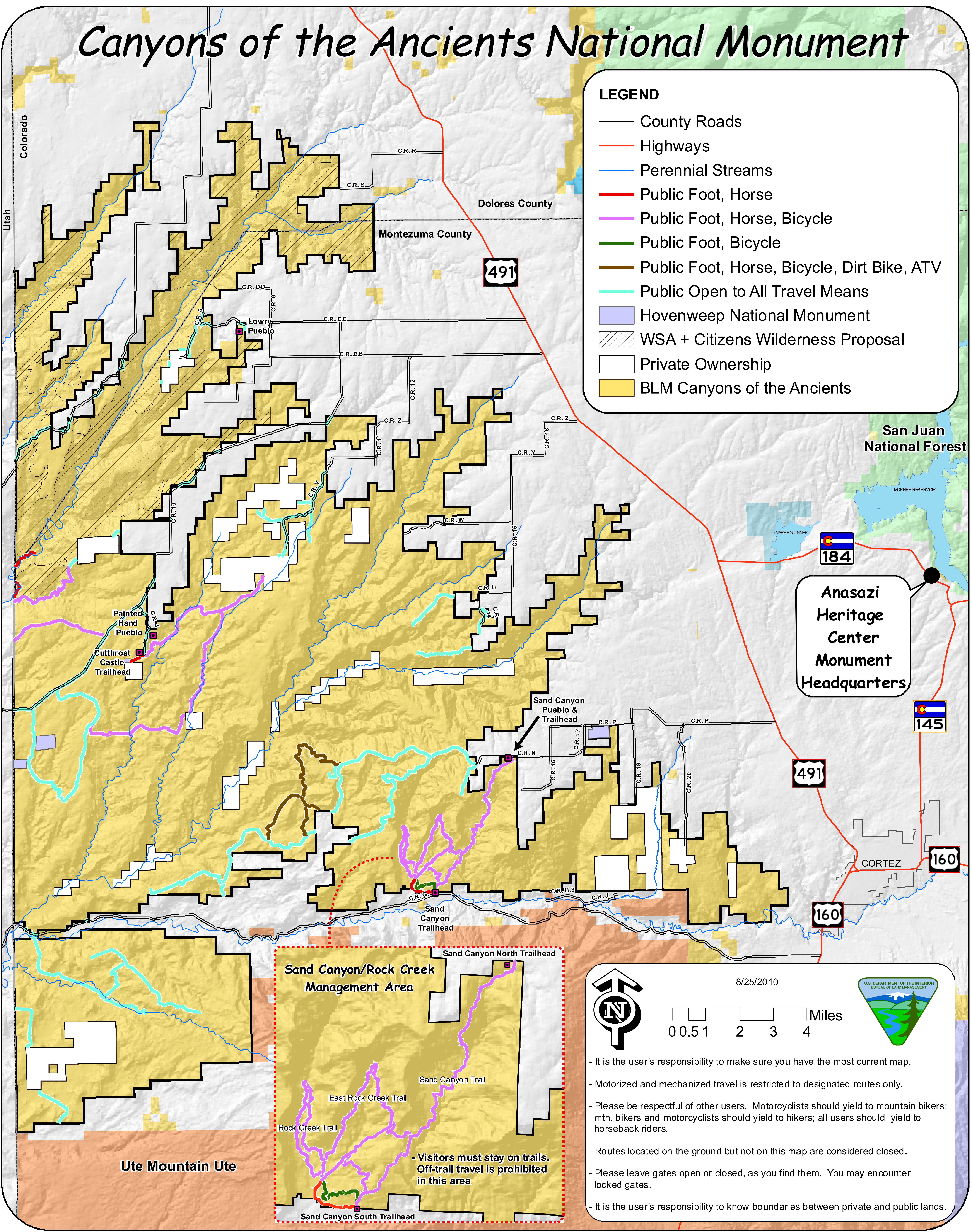


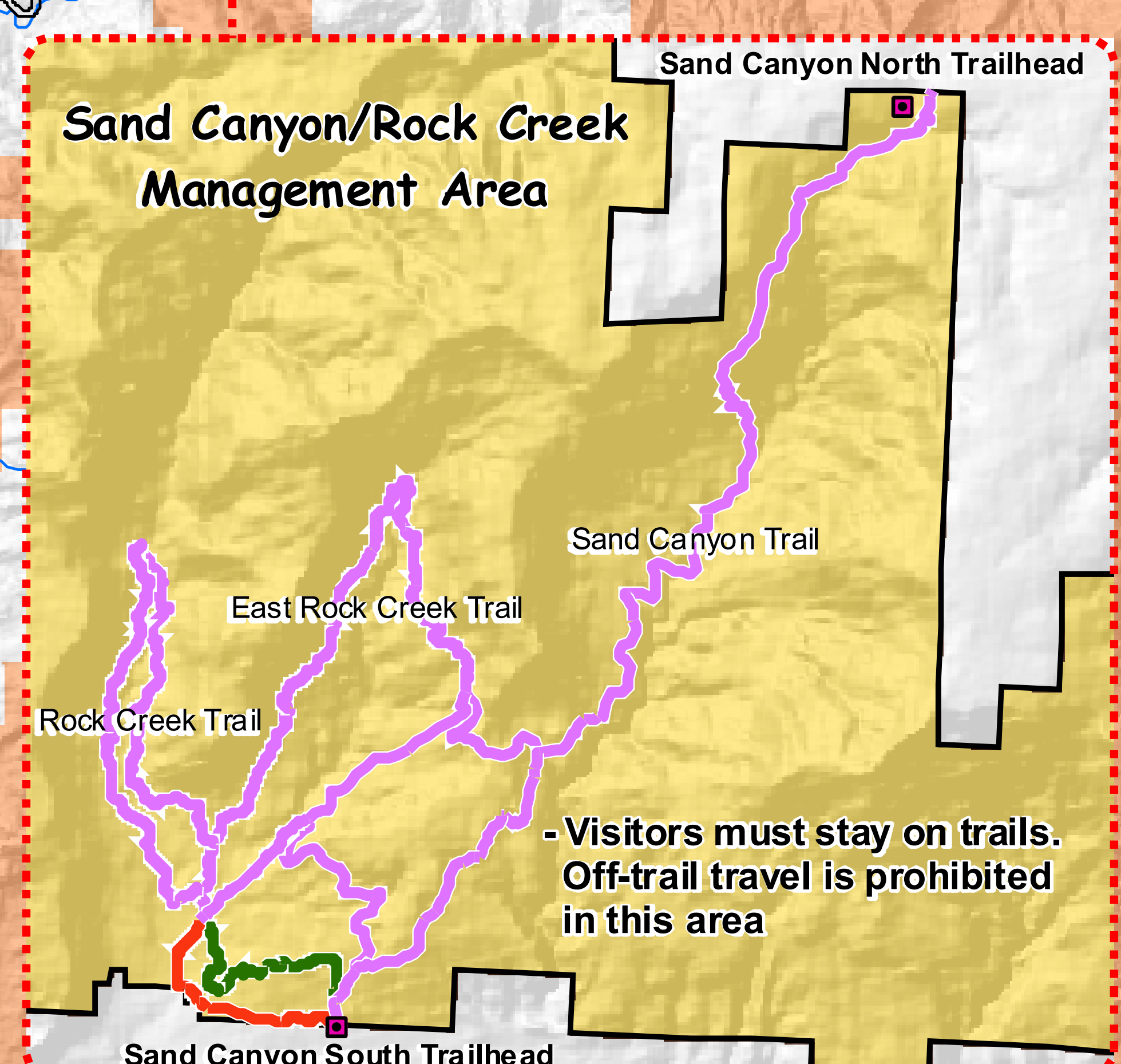
Canyons of the Ancients National Monument

LEGEND

- County Roads
- Highways
- Perennial Streams
- Public Foot, Horse
- Public Foot, Horse, Bicycle
- Public Foot, Bicycle
- Public Foot, Horse, Bicycle, Dirt Bike, ATV
- Public Open to All Travel Means
- Hovenweep National Monument
- WSA + Citizens Wilderness Proposal
- Private Ownership
- BLM Canyons of the Ancients

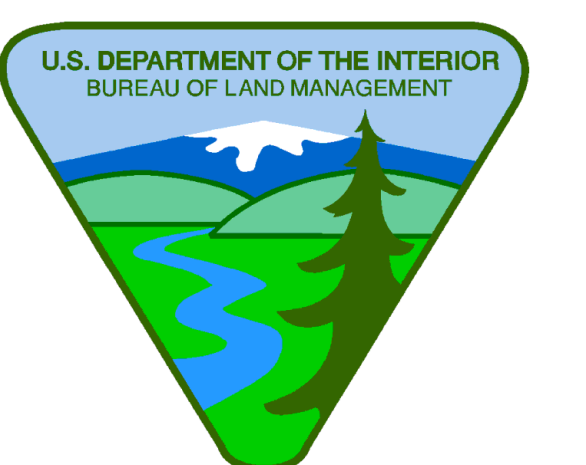


Anasazi
Heritage
Center
Monument
Headquarters



8/25/2010

0 0.5 1 2 3 4 Miles



- It is the user's responsibility to make sure you have the most current map.
- Motorized and mechanized travel is restricted to designated routes only.
- Please be respectful of other users. Motorcyclists should yield to mountain bikers; mtn. bikers and motorcyclists should yield to hikers; all users should yield to horseback riders.
- Routes located on the ground but not on this map are considered closed.
- Please leave gates open or closed, as you find them. You may encounter locked gates.
- It is the user's responsibility to know boundaries between private and public lands.