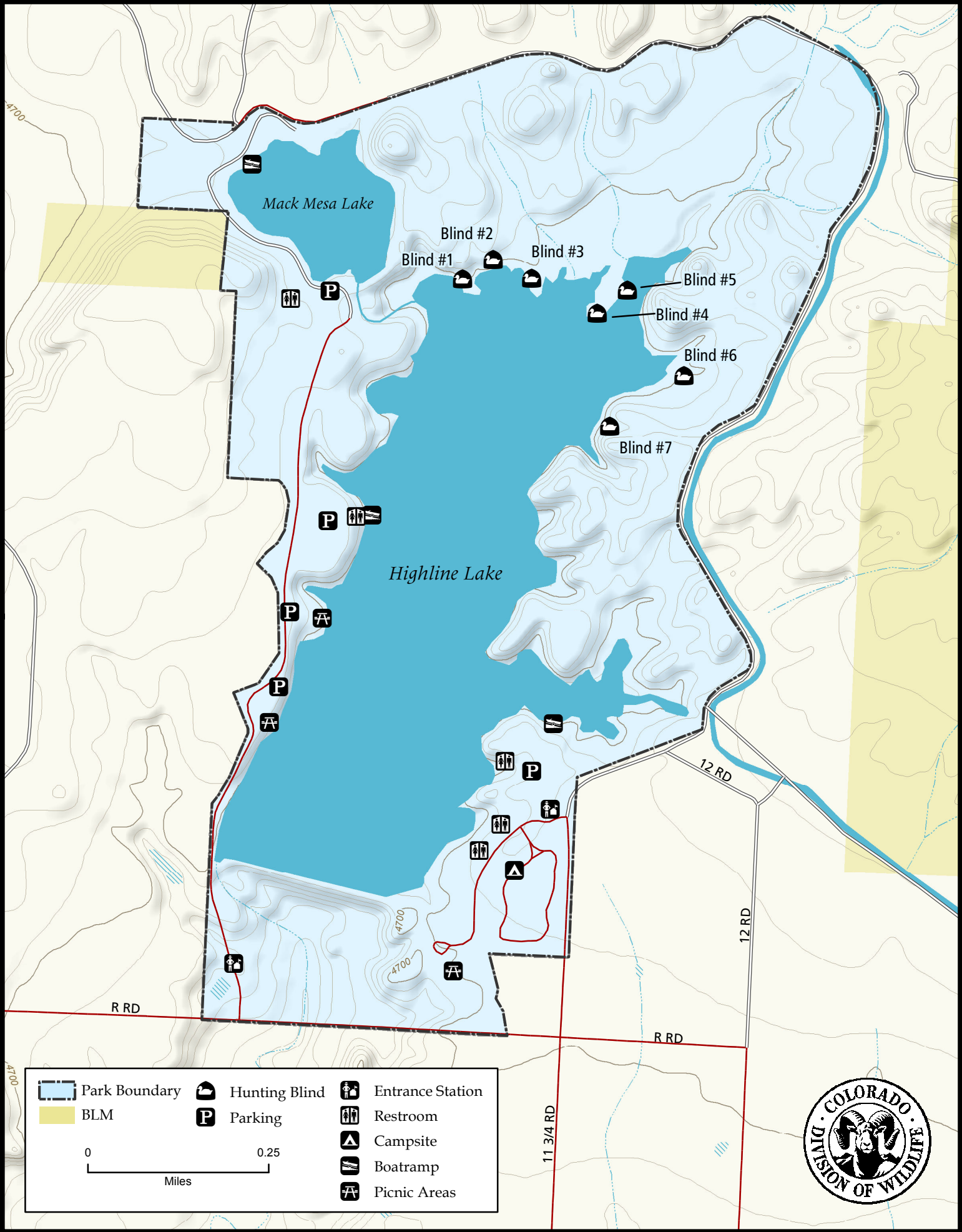
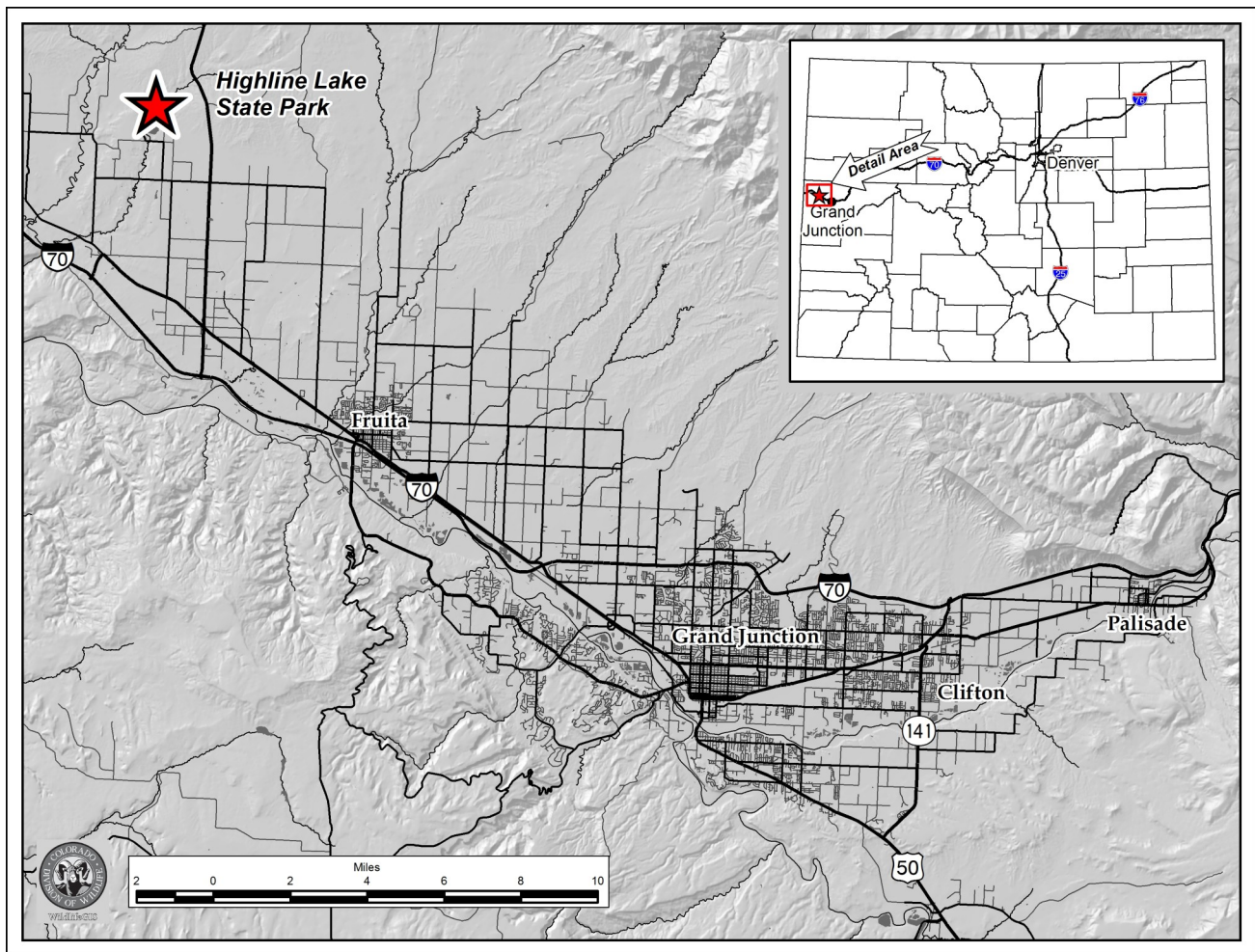


Highline Lake State Park





Highline Lake State Park – Mesa County

Drive west on I-70 west from Grand Junction to Loma Exit, then north onto Colorado Highway 139 for six miles to Q Road. Go west on Q road for 1.2 miles, then turn north onto 11.8 Road for one mile to the park entrance.

Regulations:

All State Park rules and regulations apply. Please see the web site: <http://www.parks.state.co.us/Parks/HighlineLake/Pages/HighlineLakeHome.aspx> or call the Ranger station at (970) 858-7208 for current hunting information.

- A. Waterfowl hunting on Highline Lake is prohibited on Saturdays and Sundays.
- B. Waterfowl hunting is limited to designated blinds only, with a maximum of four (4) hunters per blind. 8
- C. Hunting on this property is by reservation only. Reservations may be made in accordance with #901.A of these regulations. Hunters with reservations may only hunt the hunt area specified on the reservation. Hunters must follow check-in and

- check-out procedures as posted at the property.
- D. Hunt areas that have not been reserved will be available on a first-come, first-served basis after 5:00 am on each hunting day. Reserved hunt areas unoccupied by 7:00 am will be available on a first-come, first-served basis. However, any hunt area must be yielded at any time upon request of a hunter holding a valid and active reservation for that area.