

SNOW MOUNTAIN RANCH Nordic Center

TERMS OF USE

- Trail passes must be visible at all times.
- Please stay on mapped, marked trails.
- Snowshoes are permitted on marked snowshoe trails only.
- Rental returns are due by 5 PM.

TRAIL ETIQUETTE

- Appreciate everyone's right to enjoy the trails.
- Maintain control of your speed and direction at all times.
- Downhill and slower skiers have the right of way.
- Skate skiers: please do not ski over classic tracks.
- Do not stop where you obstruct a trail or are not visible to others.
- Obey all signs and posted warnings.
- Keep off closed trails.
- Snowshoers: please move straight across ski trails when you must cross them and do not step on classic tracks.
- Dogs are allowed on dog trails only and must be leashed. Owners are responsible for picking up after dogs.

LEGEND

- Easy
- Intermediate
- ◆ Expert
- Snowshoe Trail
- Building
- Roads
- Cabin
- Trail Junction
- Yurt
- Dog Trail
- Sombbrero Stables
- Point of Interest
- Food

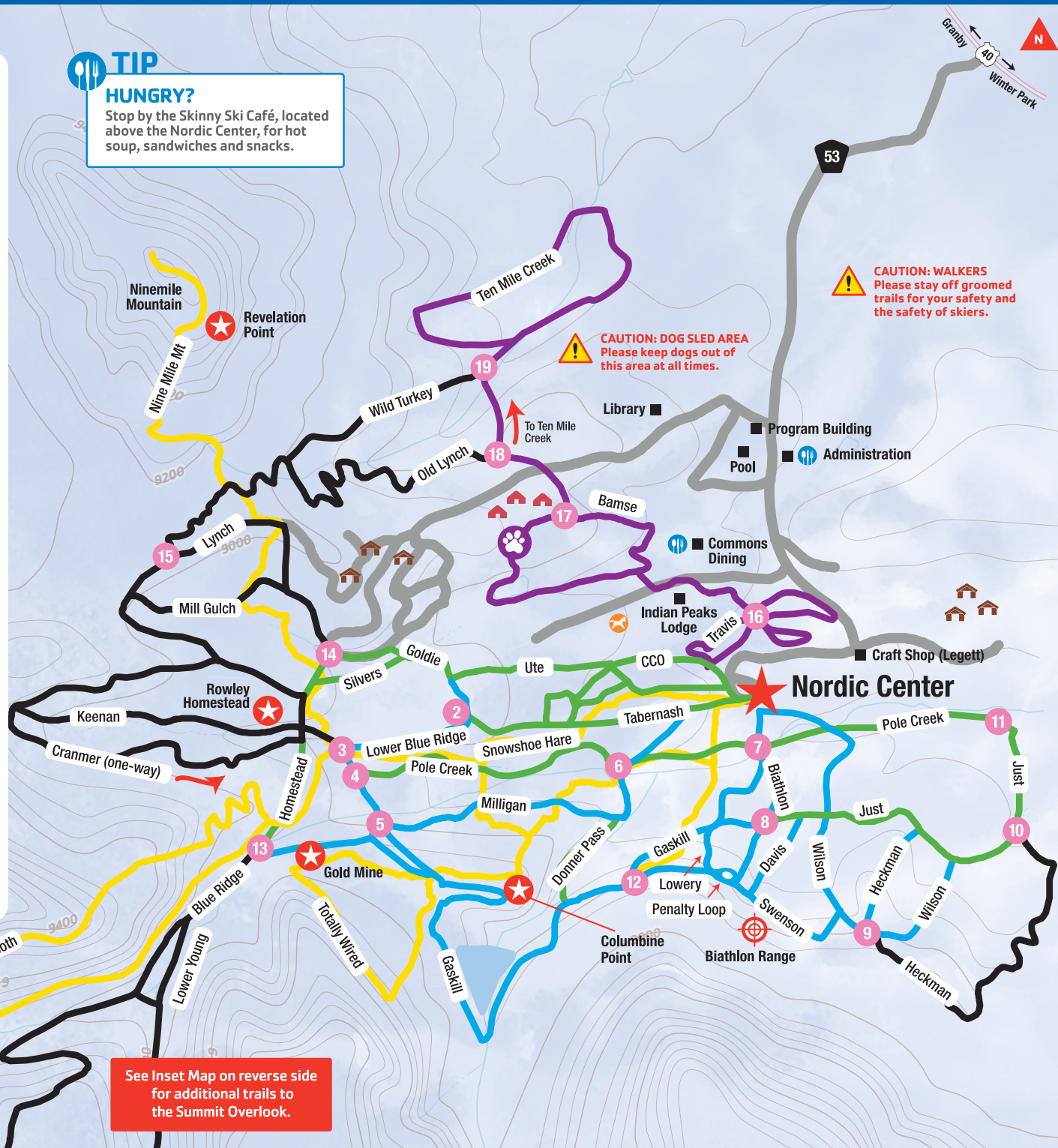


WARNING: Grooming machines and personnel may be on trails at any time.



TIP HUNGRY?

Stop by the Skinny Ski Café, located above the Nordic Center, for hot soup, sandwiches and snacks.



SKI TRAILS

Please note that trail locations and distance may change due to weather and snow conditions. Ask the Nordic Center staff for the latest trail updates.

● EASY

CCO Loops (Lighted)	1.1 Km
Bamse (Dog Loop) 🐾	2.2 Km
Goldie	0.6 Km
Homestead	0.7 Km
Just	1.4 Km
Pole Creek	2.9 Km
Silvers	0.3 Km
Tabernash	1.1 Km
Ten Mile Creek 🐾	4.2 Km
Travis (Dog Loop) 🐾	1.6 Km
Ute	1.2 Km

■ INTERMEDIATE

Biathlon	0.6 Km
Davis	0.3 Km
Donner Pass	0.4 Km
Gaskill	3.2 Km
Lower Blue Ridge	1.4 Km
Lowery	0.4 Km
Milligan	1.4 Km
Mill Gulch	0.6 Km
Swenson	1.0 Km
Wilson	1.4 Km

◆ EXPERT

Blue Ridge Loop	6.7 Km
Blue Ridge Summit	4.3 Km
Cranmer (one-way)	2.5 Km
Eagle Valley	2.1 Km
Heckman	1.9 Km
Keenan	1.1 Km
Lower Blue Ridge	1.4 Km
Lower Young	0.4 Km
Lynch	1.7 Km
Old Lynch	2.2 Km
Upper Young	0.3 Km
Wild Turkey	1.2 Km
Young	1.1 Km



IN CASE OF INJURY OR EMERGENCY

- Call the Nordic Center at 888-573-9622. Report all incidents to the Nordic Center staff.
- When assisting an injured skier, remove your skis and place them crossed and uphill from the incident. If possible, send someone to the Nordic Center to report the location, type of injury and description of the injured skier.