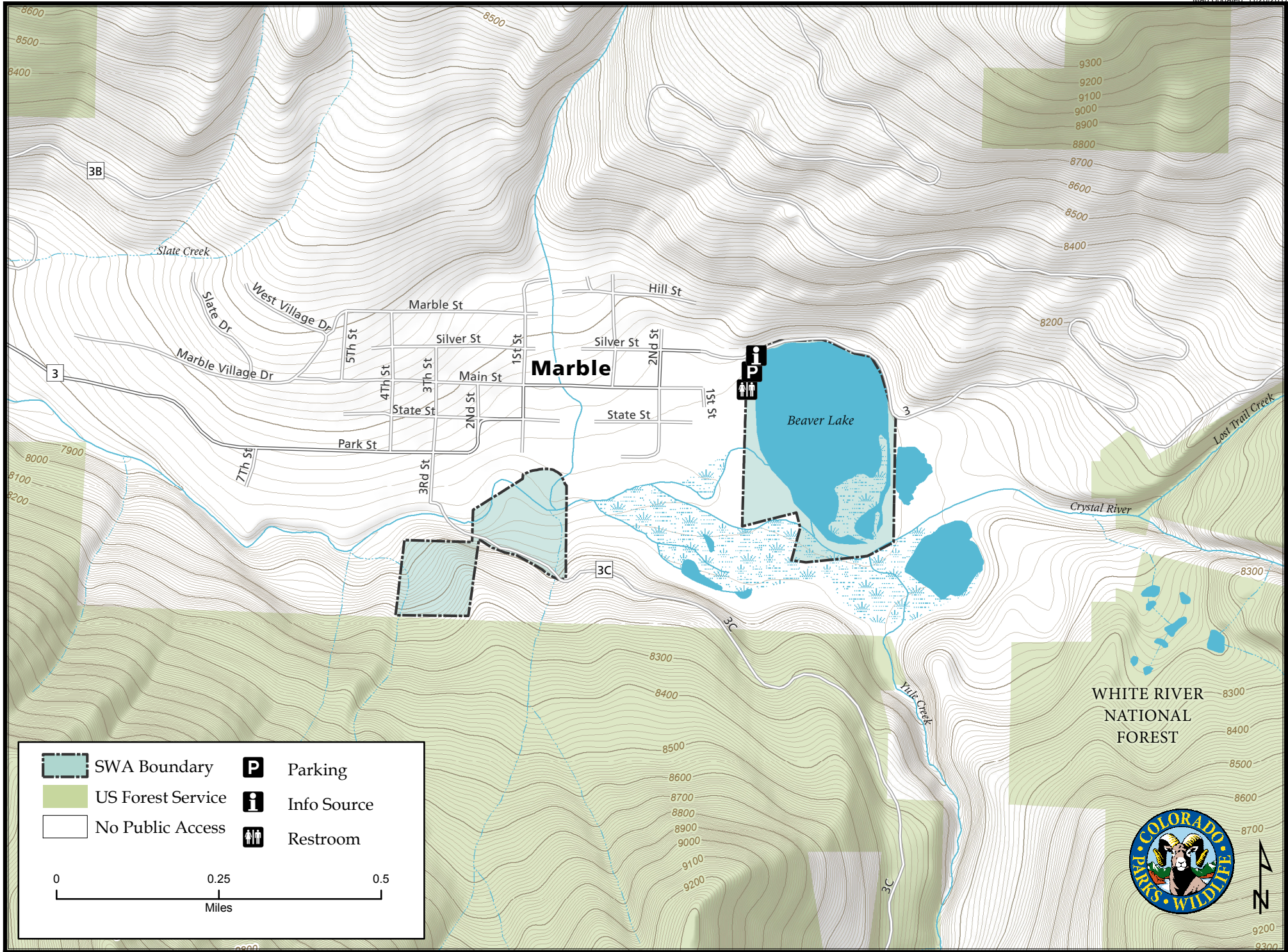
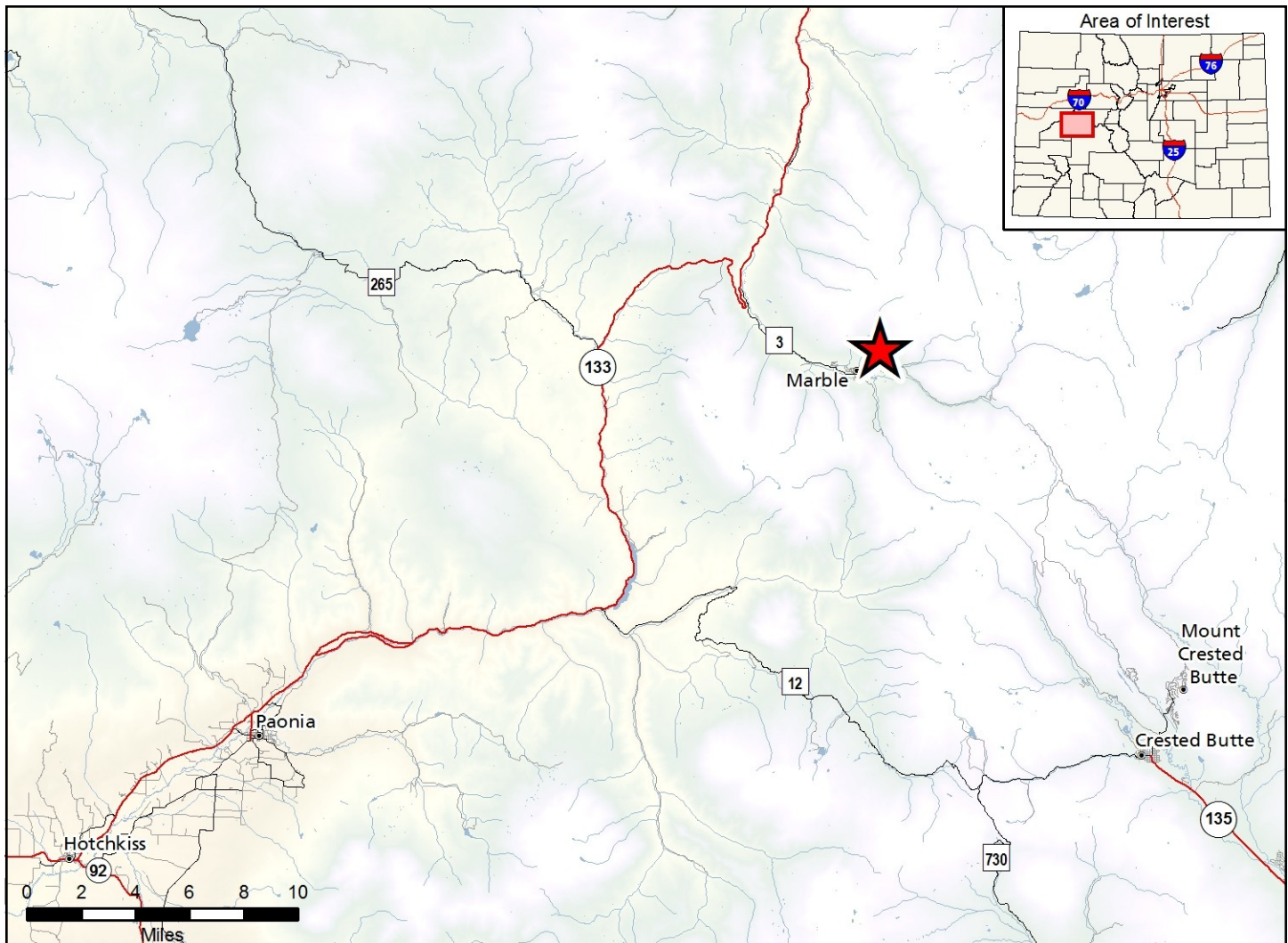


# Beaver Lake State Wildlife Area

Map Updated: 11/20/2017







### Beaver Lake SWA - Gunnison County

From Marble, go 1/4 mile east on County Road 3 to the lake.

#### Wildlife Area Offers:

Fishing: Coldwater Stream, Coldwater Lake

Recreation: Wildlife Viewing

#### Regulations:

In addition to or in place of those restrictions listed in regulation #900 the below listed provisions or restrictions apply (see Ch. 9, <http://cpw.state.co.us/aboutus/Pages/Regulations.aspx>).

- A. Boating is prohibited, except for float tubes or craft propelled by hand.
- B. Camping is prohibited.
- C. Discharge of firearms or bows is prohibited.
- D. Fires are prohibited.
- E. Vehicles are prohibited on dam.

#### More Information:

CPW Office (Glenwood Springs): (970) 947-2920

CPW Website: <http://cpw.state.co.us/>