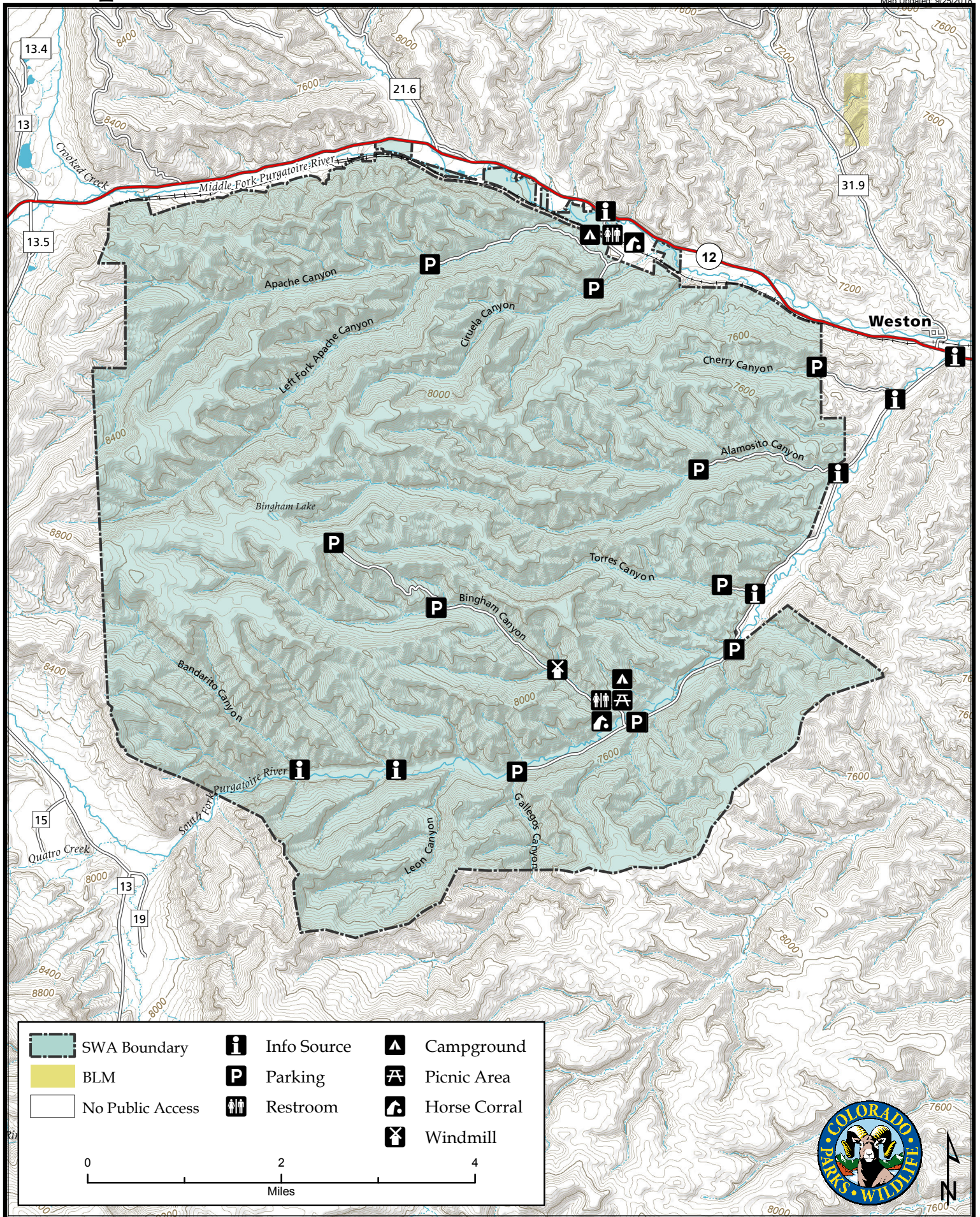
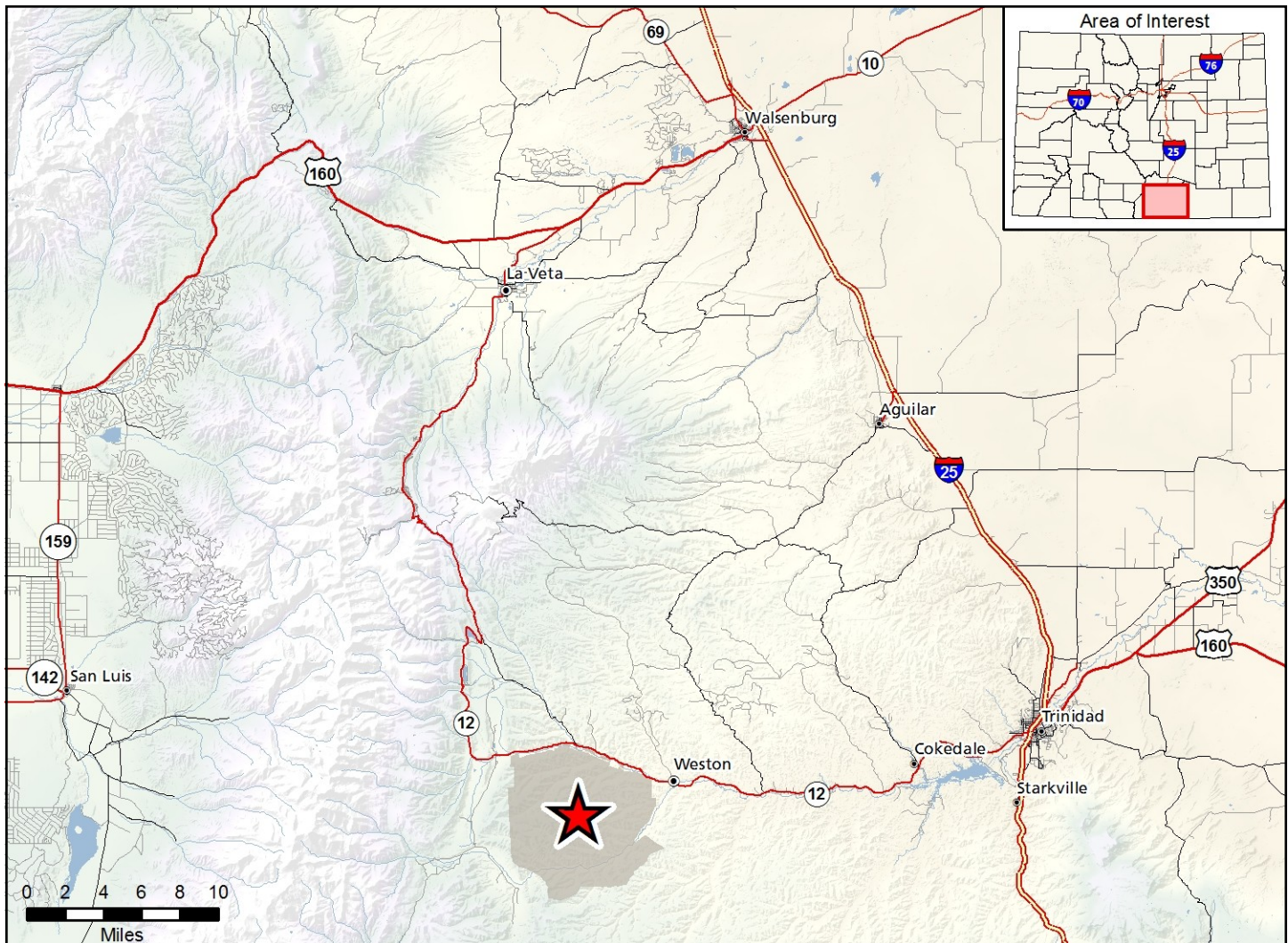


Bosque del Oso State Wildlife Area

Map Updated: 9/25/2018





Bosque Del Oso SWA - Las Animas County

From Trinidad, go 20 miles west on Highway 12 to Weston. Just before you enter town, look for the CPW signs on the south (left) side of the highway. Turn south on the access road that leads to six parking areas, including the Oso Malo (Bad Bear) camping area.

Wildlife Area Offers:

Hunting: Deer, Elk, Bear, Turkey, Small Game, Mountain Lion
Fishing: Coldwater stream

Regulations:

In addition to or in place of those restrictions listed in regulation #900 the below listed provisions or restrictions apply (see Ch. 9, <http://cpw.state.co.us/aboutus/Pages/Regulations.aspx>).

- A. Campfires are prohibited, except in designated areas and in the fire containment structures provided by the Division.
- B. The discharge of firearms or bows is prohibited, except while hunting.
- C. Discharge of bows is allowed for bowfishing.
- D. Camping is prohibited outside designated areas, except by hunters during an established hunting season.
- E. Parking is prohibited, except in designated areas.
- F. Leaving unattended any food or refuse is prohibited unless it is being stored in a bear resistant manner or container.
- G. Snowmobile, motorized and all-terrain vehicles and bicycle use of established roads and trails may be prohibited when necessary to protect wildlife and prevent resource damage. Closures will be posted.
- H. Public access is prohibited from December 1 through March 31, except for properly licensed big game hunters and one non-hunting companion.
- I. Fishing is prohibited on the South Fork of the Purgatoire River within the boundaries of the Bosque del Oso State Wildlife Area from the first day after the Labor Day holiday weekend to the first day of the Memorial Day holiday.

More Information:

CPW Office (Pueblo): (719) 561-5300

CPW Website: <http://cpw.state.co.us/>