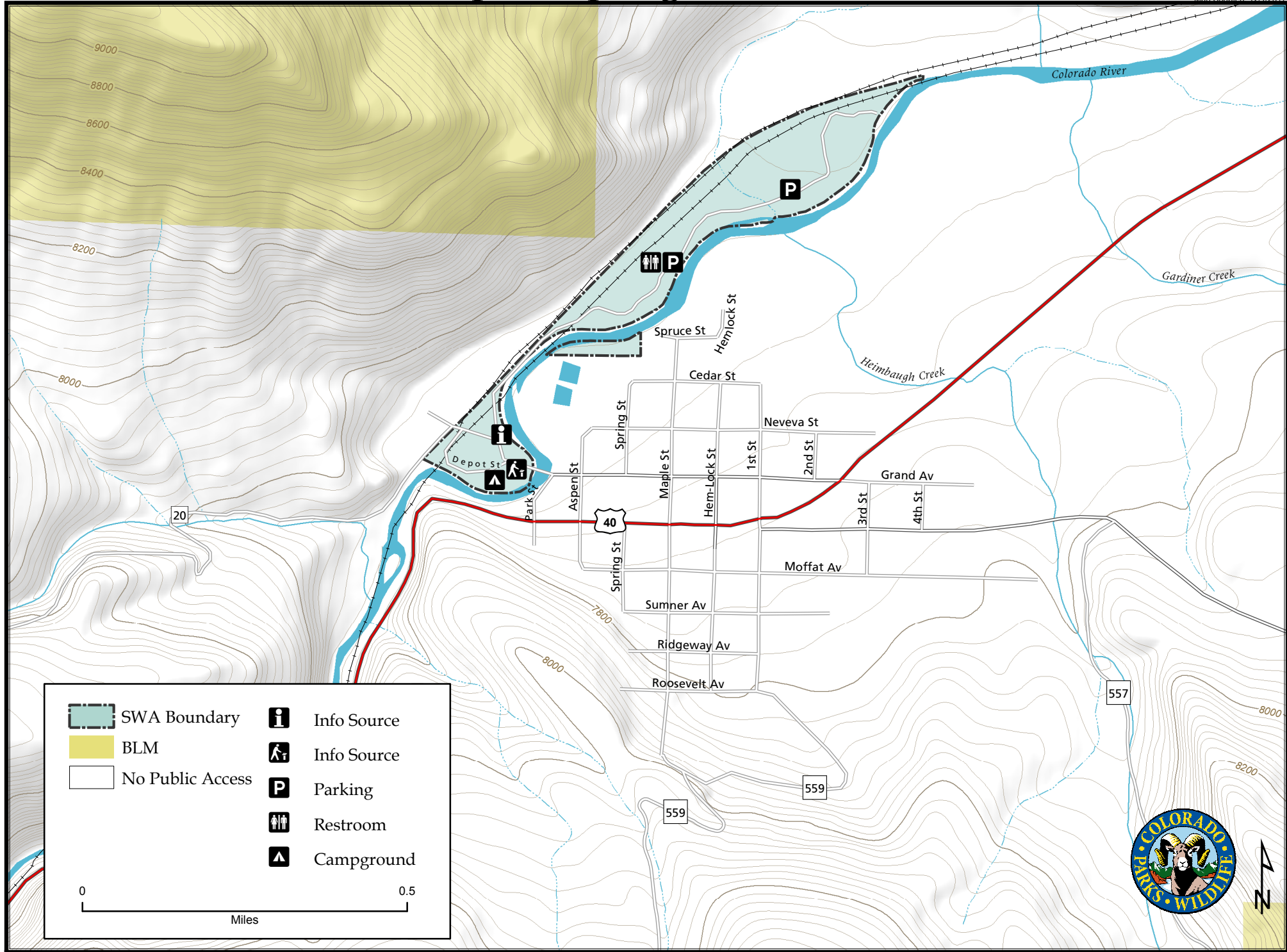
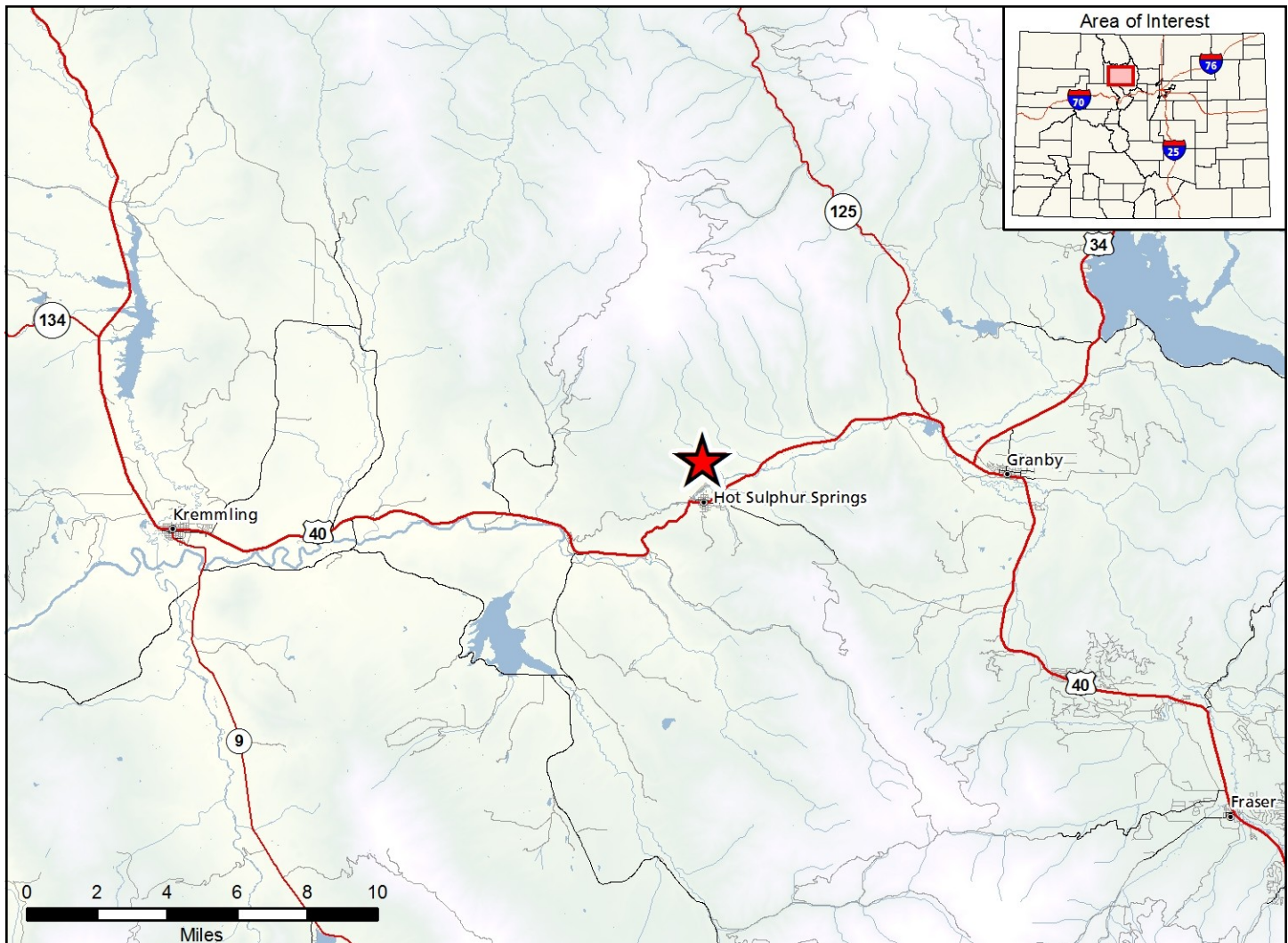


Pioneer Park Unit - Hot Sulphur Springs State Wildlife Area

Map Updated: 12/1/2017





Hot Sulphur Springs SWA - Pioneer Park - Grand County

In Hot Sulphur Springs, from Highway 40, go north on Park Street one block. Turn west on Grand Avenue (left) and cross the Colorado River.

Wildlife Area Offers:

Fishing: Coldwater Stream

Recreation: Camping, Wildlife Viewing

Regulations:

In addition to or in place of those restrictions listed in regulation #900 the below listed provisions or restrictions apply (see Ch. 9, <http://cpw.state.co.us/aboutus/Pages/Regulations.aspx>).

A. Bowfishing prohibited.

More Information:

CPW Office (Sulphur Springs): (970) 725 - 6200

CPW Website: <http://cpw.state.co.us/>